

# GENERATION 6020S & 6020

SCREEN | DOUBLE GLASS  
FRAMELESS DIRECT VENT FIREPLACE

GEN 6020 shown with  
double glass, Birch log set  
and Ice Glass Media



KOZY  HEAT  
FIREPLACES



GEN 6020S shown with  
Weathered log media  
and lava rock

## THE GENERATION SERIES

### Media Options



Birch Logs



Weathered Logs



Geometric Spheres



Ice Glass Media



Lava Rock Media

### Burn Videos



GEN 6020  
Spheres



GEN 6020S  
Birch Log



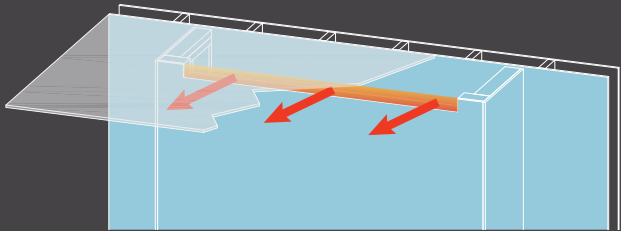
GEN 6020S  
Weathered Log



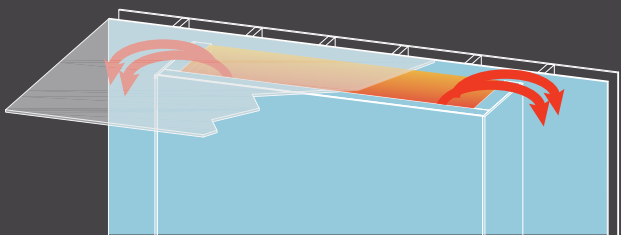
# THE GENERATION SERIES

## Heat Management Options GEN 6020S & GEN 6020

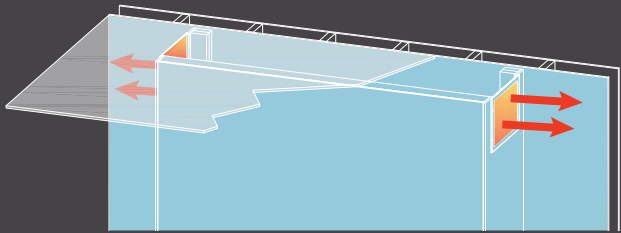
*\*You must select one of the Heat Management Options (vented cavity or Kozy Zone Kit) to cool off the fireplace chamber. Please refer to the owner's manual for detailed installation information.*



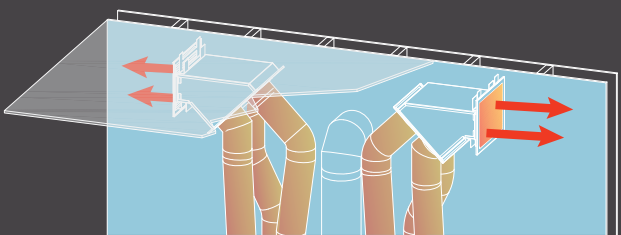
Front Vented Cavity



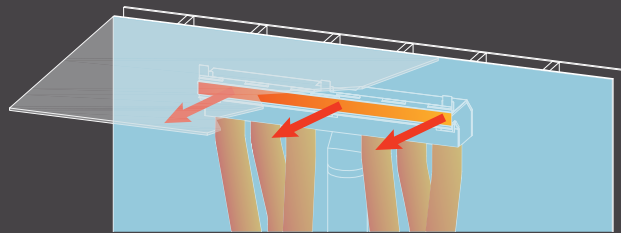
Top Vented Cavity



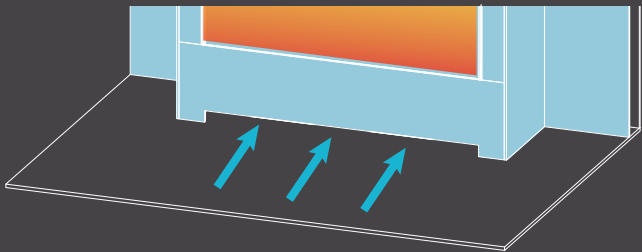
Side Vented Cavity with Grille



Side Plenum KZK



Front Plenum KZK



Front Intake – Double Glass Only (Required)



GEN 6020 shown  
with double glass,  
Geometric Spheres and  
Ice Glass Media

# GENERATION 6020 SERIES

## Specifications

Model	GEN 6020S	GEN 6020
Height	47-1/4"	47-1/4"
Width	60-1/4"	60-1/4"
Depth	21-1/2"	21-1/2"
Weight	435 lbs	535 lbs
Viewing Area	60" x 18-1/2"	60" x 20"
BTU NG High / Low	50,000 / 27,000	50,000 / 27,000
BTU LP High / Low	50,000 / 26,000	50,000 / 26,000
P.4 NG/Propane	71.05% / 71.68%	71.05% / 71.68%
Steady State NG / LP	70.35% / 70.90%	70.35% / 70.90%
AFUE % NG / LP	71.05% / 72.72%	71.05% / 72.72%
Valve System	IPI	IPI
Media Options	Weathered Log Set, Birch Log Set, Geometric Spheres	
Burner Media (Required)	Lava Rock, or Ice Glass Media	Ice Glass Media Included
Black Glass Firebox Panels	Optional	Included
Ceramic Glass	Included	Included
Invisimesh Safety Screen	Required	N/A
Multi-color LED Lighting	N/A	Included
Top Light Kit	Included	Included
Horizontal Power Vent	Optional	Optional
Front Intake	N/A	Required
Heat Release	Required	Required

Features, Options & Specifications are subject to change.

Each unit factory tested Certified to ANSI Z21.88 Vented Gas Heaters

## KOMFORT CONTROL, Lighting, & Accessories



RGBW LED Controller  
6020 model only.

### Remote control features:

- RGBW Color Wheel
- Programmable Buttons
- Dimmable and Modulation



Komfort Kontrol

### Remote control features:

- Thermostat function
- Flame height modulation
- Top Light Kit: Modulation
- IPI to continuous pilot

## Clearances

### Minimum Fireplace Clearances to Combustibles:

Minimum enclosure height: 90" (2286mm)  
Base to ceiling: 90" (2286mm)  
Top/Back/Nailing Flanges: 0"  
Corners: 3" (76mm)  
Front: 36" (914mm)  
Side to adjacent wall: 18" (457mm)  
Hearth extension: 0"

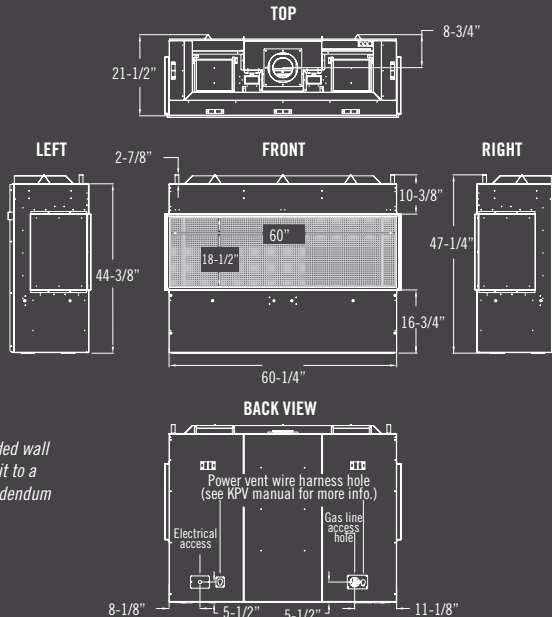
### Mantel Clearance:

GEN 6020: 16" projection = 0" clearance  
GEN 6020S: 6" projection = 2" (51mm) clearance  
Mantel trim is allowed, but must start at mantel height

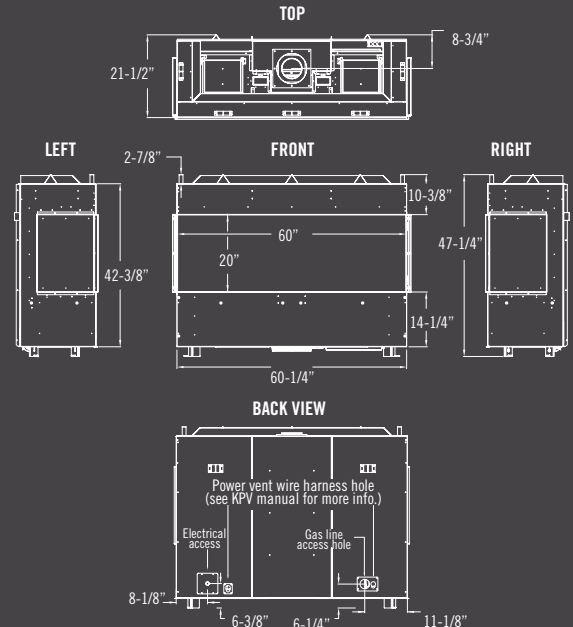
### Minimum Vent Clearance Inside Fireplace Chamber

Horizontal – top: 3" (76mm); left/right/bottom: 1" (25mm)  
Vertical – all surfaces: 1" (25mm)  
Wall Pass Through Clearances – 5" x 8" is 1/2" and 4" x 6-5/8" is 1". Power vent is the only 4" x 6-5/8" horizontal vent termination allowed.

### GEN 6020S



### GEN 6020



\*Unit shipped is for single-sided wall installation. To convert the unit to a corner/bay, see Conversion Addendum for necessary components.

**KOZY HEAT**  
FIREPLACES

In order to continually provide the highest quality product available, features/options, specifications, & dimensions are subject to change. Flame appearance and characteristics may be affected by altitude, fuel type, venting configuration, and other factors. Refer to the unit installation manual for complete installation instructions. Installation must conform with local building codes. In some regions it may be possible that this appliance qualifies for an energy rebate. See your local dealer for details regarding promotions and qualifications.

Manufactured by Hussong Mfg. Co., Inc.  
204 Industrial Park Road, Lakefield, MN 56150  
Phone 1-800-253-4904 www.kozyheat.com 9-25



Product Line:



For complete information on the Kozy Heat product line, please contact us at:

FOR CALIFORNIA RESIDENTS ONLY

⚠ California Proposition 65 Warning

**WARNING:** This product can expose you to chemicals including Carbon Monoxide, that is an externally vented by-product of fuel combustion, which is [are] known to the State of California to cause birth defects or other reproductive harm. For more information, visit [www.P65Warnings.ca.gov](http://www.P65Warnings.ca.gov).