

# Signature

ELECTRIC FIREPLACES

Amantii

Amantii Signature Series, featuring Optimyst® technology patented by Dimplex. The unique Optimyst® water-based system generates an ultra-realistic 3D flame effect that, when combined with Amantii's electric flame, delivers an entirely immersive ambiance.



Patented

Optimyst®

Inside

*Signature*  
by Amantii

**Optimyst**<sup>®</sup>  
by Dimplex<sup>®</sup>

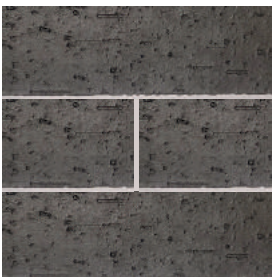
Embark on a journey into the future of home heating with this ground breaking fusion of style, technology, and eco-friendly innovation.

Introducing the revolutionary Signature Series: Hybrid Electric-Vapour Fireplace. A cutting edge collaboration between two industry leaders, Amantii - synonymous with luxury and craftsmanship - and Dimplex, the pioneer of electric fireplaces who set the standard for realism.

The Signature series seamlessly marries the elegant style of Amantii, with Dimplex's patented, state-of-the-art Optimyst<sup>®</sup> technology, creating an unparalleled experience.

Immerse yourself in the mesmerizing dance of realistic smoke and flame created by Optimyst<sup>®</sup>, defying expectations and creating an ambiance so authentic, you'll forget it's electric.

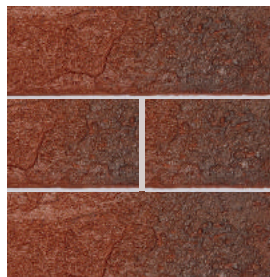
### OPTIONAL SIDE PANELS :



DARK BROWN



WENGE BROWN



USED RED BRICK



BLACK GLASS

### FLAME PRESENTATION



ORANGE FLAME



YELLOW FLAME



RED FLAME



Featuring **Optimyst**® technology  
The world's most realistic 3D electric flame  
effect, patented by Dimplex. This unique  
flame effect is generated by an innovative  
combination of water vapor and light. 3

# SIGNATURE SERIES | ELECTRIC FIREPLACES

## KEY FEATURES

- Our tech specifications proudly detail 12.5 Amps dedicated to our fireplace with the heater on, complemented by 3.83 Amps for the Dimplex cassette, culminating in a total requirement of 17 Amps when the heater is set to high.
- Optimyst® Flame Effect – Revolutionary, patented ultrasonic technology produces a fine mist of water vapour to create the illusion of flames and smoke.
- Flame Intensity Adjustment – Allows you to control the flame volume according to your preference.
- Continuous Water Supply – Opt for the optional plumbed water supply kit to ensure uninterrupted operation without the need for refilling water tanks.
- Zero Emissions – The most sustainable fireplace option; no emissions and 100% efficient.
- Innovative Fusion – A groundbreaking concept that seamlessly combines the warmth of a flame, exceptional quality, and immersive sound—introducing a fireplace with integrated audio.
- This model can only be built-in.
- Fire & Sound – Two (2) quality audio speakers deliver a crackling sound. The audio is an ON/OFF feature that can be controlled through the WiFi app. Available on the Google play store and the Apple App Store.
- Intuitive Remote (included) – Colorful Intuitive remote to adjust the flames, temperature, or timer. Patented Thermostatic remote. Can be set, adjusted, and programmed for your fireplace to turn on when you want and at the temperature you want.
- Flame Presentation – State of the art flame presentation: Vibrant, multi-colored state of the art flame presentation – change from Yellow to Orange to Red with just a click of the remote.
- WiFi App – For complete control from any room. Set the fireplace to turn on before arriving home, or have it turn on automatically when the weather is cold.
- Bluetooth Connectivity – Featuring a fireplace with high quality audio from Bluetooth speakers. Simply pair your phone with the fireplace and press play on your smartphone.

## INCLUDED ACCESSORIES



GRATE FOR LOGS

YOUR CHOICE:



DESIGN-MEDIA-BIRCH-15PCE



DESIGN-MEDIA-DRIFT-15PCE



DESIGN-MEDIA-RUSTIC-14PCE



DESIGN-MEDIA-SPLIT-LOG-16PCE



DESIGN-MEDIA-OAK-18PCE



ICE-MEDIA-FI-109-DIAMOND

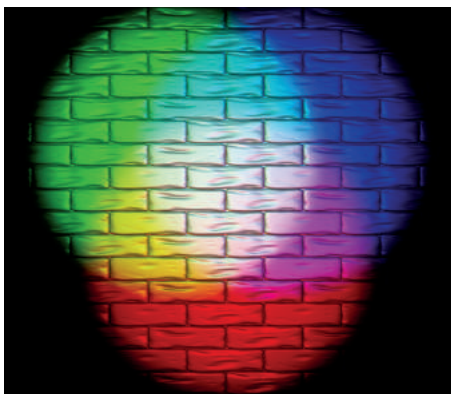
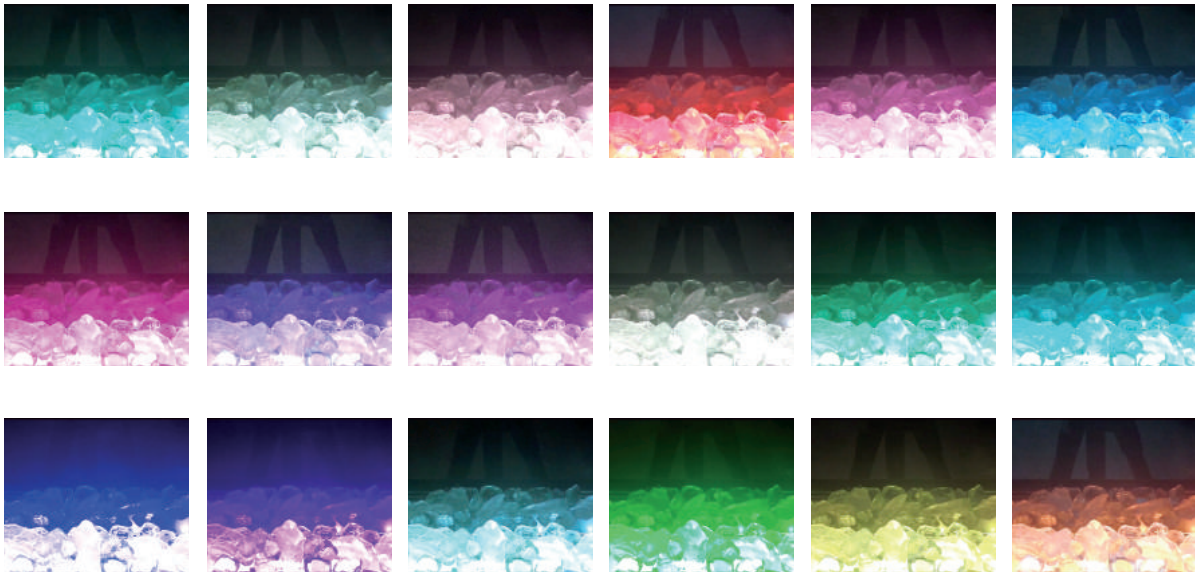


# SIGNATURE SERIES | ELECTRIC FIREPLACES

## KEY FEATURES

- Capable of functioning independently from Optimyst®, this feature highlights Amantii's stunning electric flame pattern in its pure, standalone glory.
- Programmable timer & thermostat allows you to decide the temperature of the room. Set the fireplace to turn on before you arrive home or have it automatically turn on when the weather is cold.
- Smart Room Temperature Control – 59°F – 82°F or 15°C – 28°C.
- 1465W 5000 BTU, heats up to 500 Sq. Ft. May also be wired up to 240V/3000W to increase the BTU output to 10,000 and heat up to 1,000 Sq. Ft.
- 50000 hours lifetime LED light source.
- Adjustable ember bed colors that allow for the possibility of auto mixing thousands of colors.
- Most quiet and reliable components in the industry.

## EMBER BED COLORS



*Ember bed with adjustable colors, auto-mixing, offering thousands of possibilities.*



Shown with  
Optimyst® on



AM-SIG-BROCH JAN 2024

Distributed By:

Product updates, specifications and dimensions are subject to change. Please refer to the product manual to verify measurements and clearance requirements. All local building codes must be followed.

*Amantii*

Visit our online showrooms at:

[www.amantii.com](http://www.amantii.com)