



LEXINGTON

HEARTH



KENTUCKY-INSPIRED. EXPERTLY-CRAFTED.

NON-COMBUSTIBLE MANTELS

LEXINGTONHEARTH.COM



Antique Timbers, Without the Splinters

NATURE RE-CREATED

THE BEAUTY OF NATURAL MATERIALS IN
NON-COMBUSTIBLE MANTELS

Why non-combustible mantels
are the “hottest trend in hearth”

SOLUTION. SOLUTION. SOLUTION.

The dream of many homeowners is to have a fireplace and a TV on the same wall. Non-combustible mantels from Lexington Hearth can be placed closer to the fireplace opening to expand the usable area above a mantel while shielding televisions and decorations from excessive heat.



3 THINGS WORTH BRAGGING ABOUT

1 Design.

Our mantels are cast from the real thing, antique wooden beams. We review dozens of beams to get the right look.

2 Lead Times.

Due to our sophisticated manufacturing capabilities, all our mantels ship in a matter of days – not weeks.

3 Detail.

Mantels are hand-cast from each mold using our high-definition Burncrete™, a patented non-combustible casting formulation that authentically replicates the rich texture and character details of antique wood and stone.



HAYLOFT BEAM



RICKHOUSE



BORN IN THE BLUEGRASS

Lexington Hearth mantels are inspired by old-growth timbers and beams salvaged from historic barns, farms, homes, and cabins across Bourbon Country.

Who is Lexington Hearth?

Lexington Hearth is designed and manufactured in Lexington, KY by Everburn Manufacturing, Inc. A mainstay in the Central Kentucky economy, 180 employees keep the 160,000 square foot factory humming.



Everburn is a 30-year-old company, and in that time has perfected its processes for casting and painting non-combustible components for gas hearth appliances, such as fireplaces, fireplace inserts and freestanding stoves. In fact, Everburn is the largest component supplier (often called OEM, or Original Equipment Manufacturer) in the entire hearth industry.

Everburn has invented and patented a proprietary formula for non-combustible mantels, called Burncrete™.

Perfectly IMPERFECT

Part of the charm of Lexington Hearth products are the character marks that provide an authentic look and feel of antique timbers. The patina of time and hand-tooling methods that make these timbers so desirable also produce irregular dimensions that are difficult to accurately measure. So, when we describe a timber, we use nominal measurements that can be larger or smaller than the actual dimensions.

Across the length, depth, and height of the mantel, there may be as much as a half-inch change of measurement on various sections of the mantel. This

is not a product defect; it is a beautiful feature that celebrates the unique character of reclaimed timbers. Please keep this in mind when preparing for installation. We recommend that you have our Lexington Hearth product on-site before roughing in the mounting surface.





SCAN FOR VIDEO

GRIST MILL

5' WIDE, 69 LBS. OR 6' WIDE, 86 LBS.
5.75" TALL | 6" DEEP | 4 COLORS

HAND-CRAFTED. SIZES, COLORS, AND WEIGHTS CAN DIFFER ON EACH MANTEL.

Our Grist Mill mantel is molded directly from a barn beam for an authentically rustic look. Features include deeply weathered woodgrain, tool marks, saw marks, checks & splits, and knots.



PALE HONEY

WEATHERED GREY

MADURO

ECLIPSE



SCAN FOR VIDEO

RICKHOUSE

5' WIDE, 106 LBS. OR 6' WIDE, 141 LBS.
7.5" TALL | 7.5" DEEP | 4 COLORS

HAND-CRAFTED. SIZES, COLORS, AND WEIGHTS CAN DIFFER ON EACH MANTEL.

The Rickhouse is reminiscent of aging warehouses used to store barrels of bourbon. Mortice & tenon joinery and saw marks are highlighted in this mantel molded directly from an old-growth timber.



PALE HONEY

WEATHERED GREY

MADURO

ECLIPSE



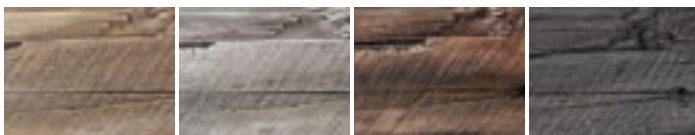
SCAN FOR VIDEO

CABIN PINE

5' WIDE, 65 LBS. OR 6' WIDE, 75 LBS.
6" TALL | 6" DEEP | 4 COLORS

HAND-CRAFTED. SIZES, COLORS, AND WEIGHTS CAN DIFFER ON EACH MANTEL.

Featuring a unique transition from square to round edge, the Cabin Pine mantel captures the rustic imperfections of primitive Kentucky craftsmanship with multi-level splits and nail hole details.

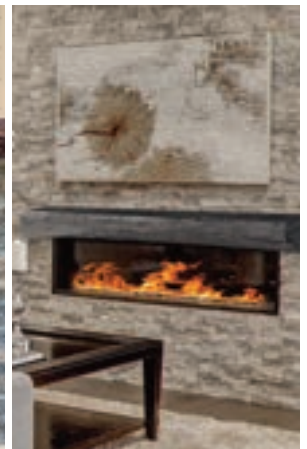


PALE HONEY

WEATHERED GREY

MADURO

ECLIPSE





SCAN FOR VIDEO

FLAT SAWN BEAM

5' WIDE, 80 LBS. OR 6' WIDE, 97 LBS.
4" TALL | 8.25" DEEP | 4 COLORS

HAND-CRAFTED. SIZES, COLORS, AND WEIGHTS CAN DIFFER ON EACH MANTEL.

With a more contemporary aesthetic, the Flat Sawn Beam is reminiscent of the fencing lining the rolling fields of Kentucky horse farms. Saw marks and wood grain details are prominent.



PALE HONEY

WEATHERED GREY

MADURO

ECLIPSE



SCAN FOR VIDEO

HALF ROUND SLEEPER

5' WIDE, 87 LBS. OR 6' WIDE, 110 LBS.
6" TALL | 8" DEEP | 4 COLORS

HAND-CRAFTED. SIZES, COLORS, AND WEIGHTS CAN DIFFER ON EACH MANTEL.

The distinctive live-edge bark on the sleeper beam offers a rustic charm inspired by barns dotting the Kentucky landscape. We split a full-round beam lengthwise to mold our half-round sleeper mantel.



PALE HONEY

WEATHERED GREY

MADURO

ECLIPSE



SCAN FOR VIDEO

HAYLOFT BEAM

5' WIDE, 82 LBS. OR 6' WIDE, 102 LBS.
5.375" TALL | 8" DEEP | 4 COLORS

HAND-CRAFTED. SIZES, COLORS, AND WEIGHTS CAN DIFFER ON EACH MANTEL.

Paying tribute to the hayloft above Kentucky horse stables, this mantel beam captures rustic details of the original structures: dowel ends, checking and splits, character knots and nail holes.

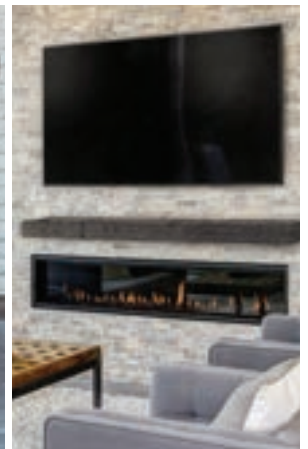


PALE HONEY

WEATHERED GREY

MADURO

ECLIPSE





SCAN FOR VIDEO

TOBACCO BARN

5' WIDE, 101 LBS. OR 6' WIDE, 130 LBS.
7.5" TALL | 7.5" DEEP | 4 COLORS

HAND-CRAFTED. SIZES, COLORS, AND WEIGHTS CAN DIFFER ON EACH MANTEL.

Fashioned from timbers that could have been recovered from an old Kentucky tobacco barn, features include hand-hewn tool marks, deep checking, knots, and growth rings visible on the ends.

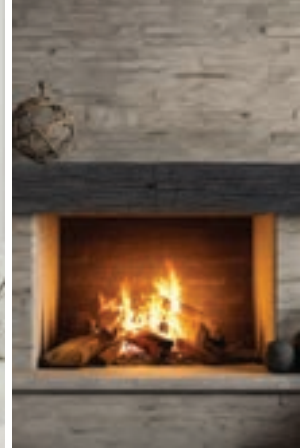


PALE HONEY

WEATHERED GREY

MADURO

ECLIPSE



SCAN FOR VIDEO

ROCKFACE

5' WIDE, 82 LBS. OR 6' WIDE, 94 LBS.
4.75" TALL | 8" DEEP | 2 COLORS

HAND-CRAFTED. SIZES, COLORS, AND WEIGHTS CAN DIFFER ON EACH MANTEL.

Kentucky's land is uniquely shaped by limestone — naturally releasing minerals into our soil, helping horses develop stronger bones and bourbon to age gracefully. Our rough chiseled mantel



TURFWAY TAN

BLUEGRASS FOG

includes crystalized minerals that reflect light and add sparkle to a fireplace.

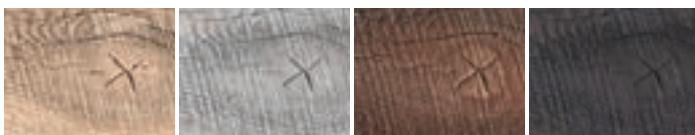


SCAN FOR VIDEO

HITCHING POST

3-PIECE SET | 4 COLORS

In a simpler time, horsepower came with a saddle. Homes and businesses across Kentucky had either a hitching post or a hitching rail to tie off horses, preventing wandering. Our 3-piece Hitching Post mantel surround features deep weathered woodgrain, tool marks, checking and splits, character knots, and nail holes, capturing the rustic charm of our Bluegrass past.



PALE HONEY

WEATHERED GREY

MADURO

ECLIPSE



TOP:

5.75" TALL | 80 LBS.
5.25" DEEP | 78.5" WIDE

LEFT/RIGHT:

56" TALL *CAN BE CUT DOWN TO OTHER SIZES
5.25" DEEP | 5.5" WIDE | 54 LBS.

HAND-CRAFTED. SIZES, COLORS,
AND WEIGHTS CAN DIFFER ON EACH MANTEL.

MANTEL ACCESSORIES



PICTURED: FLAT SAWN CORNER MANTEL (MADURO) WITH A MATTE BLACK DECORATIVE METAL BRACKET.

CORNER MANTELS

Wrap a mantel around one or both sides of the fireplace wall for depth and interest. Each style is available four finishes: PALE HONEY | WEATHERED GREY | MADURO | ECLIPSE



RICKHOUSE | HAYLOFT BEAM | GRIST MILL | GRIST MILL

METAL BRACKETS

Conceal the seams from adjoining accessories with forge-inspired metal, available in two finishes: MATTE BLACK | HAMMERED BRONZE



2' EXTENSIONS

RICKHOUSE | TOBACCO BARN
GRIST MILL (PICTURED)
HAYLOFT BEAM
FLAT SAWN



Use 2' extensions to extend or shorten the mantel size to fit your project. Available in four finishes:

PALE HONEY | WEATHERED GREY | MADURO | ECLIPSE

CORBELS

Add classic character with a set of decorative corbels. Each style is available in the same hand-painted finishes as coordinating mantels.



RUSTIC

IN 4 FINISHES:
PALE HONEY
WEATHERED GREY
MADURO
ECLIPSE

SAWMILL

IN 4 FINISHES:
PALE HONEY
WEATHERED GREY
MADURO
ECLIPSE

LIMESTONE

IN 2 FINISHES:
TURFWAY TAN
BLUEGRASS FOG

WALL BOARDS

Rough saw cuts and wood grain are prominently featured in Wall Boards designed to perfectly complement the 3-piece Hitching Post surrounds.

BUCKSKIN TAN (PICTURED)



BRINDLE BROWN



DAPPLE GREY



THE BLUEGRASS COLLECTION

KENTUCKY-INSPIRED. EXPERTLY-CRAFTED.
NON-COMBUSTIBLE MANTELS



GRIST MILL | OAK BEAM
AVAILABLE IN 5' AND 6'

RICKHOUSE | BARK EDGE TIMBER
AVAILABLE IN 5' AND 6'



TOBACCO BARN | HAND-HEWN TIMBER
AVAILABLE IN 5' AND 6'

CABIN PINE | PINE BEAM
AVAILABLE IN 5' AND 6'



HALF ROUND SLEEPER | BARK EDGE
AVAILABLE IN 5' AND 6' TIMBER

HAYLOFT BEAM | HAND-HEWN BEAM
AVAILABLE IN 5' AND 6'



FLAT SAWN BEAM | ROUGH SAWN
AVAILABLE IN 5' AND 6' CEDAR

ROCKFACE | LIMESTONE
AVAILABLE IN 5' AND 6'



HITCHING POST
ROUGH SAWN CEDAR

AVAILABLE IN ONE SIZE
POST SUPPORT HEIGHT
IS CUSTOMIZABLE