

## Vinyl Installation Addendum

Please read both sections below

### Vinyl Flooring Recommendation

Vinyl Flooring such as Luxury Vinyl Plank (LVP), Luxury Vinyl Tile (LVT), and other vinyl flooring can be sensitive to radiant heat and changes in temperature.

If using vinyl flooring, it is recommended to install the fireplace as shown in Figure 1 with the instructions provided.

Follow the two bullet points below when determining one of the recommended installation scenarios.

- If there is no preinstalled finishing edge on the fireplace then the measurement is from the base of the fireplace.
- If there is a preinstalled finishing edge on the fireplace or Finishing Trim Kit then the measurement is taken from this finishing edge.

Verify unit clearances before elevating the fireplace off the floor. Ensure the fireplace is properly supported by framing materials and maintains ceiling clearances. See your appliance installation manual for more information.

If using either of the two hearth options below, make sure to maintain the proper gap per your flooring MFG's installation instructions between the flooring and the hearth.

#### Installation Scenarios

1. Elevate the fireplace 24" (610mm) above the vinyl floor. No hearth is required. The vinyl floor can be installed to the fireplace enclosure front wall.
2. Install the fireplace at floor level with a 36" (915mm) deep flush hearth the width of the fireplace. The flush hearth can be finished with a combustible wood product or a noncombustible material. Do not finish the hearth with carpet, vinyl product, or any other combustible material.
3. Install the fireplace 12" (305mm) above the vinyl floor with a 12" (305mm) high and 12" (305mm) deep hearth. The hearth can be combustible wood product or a noncombustible material. Do not finish the hearth with carpet, vinyl product, or any other combustible material.

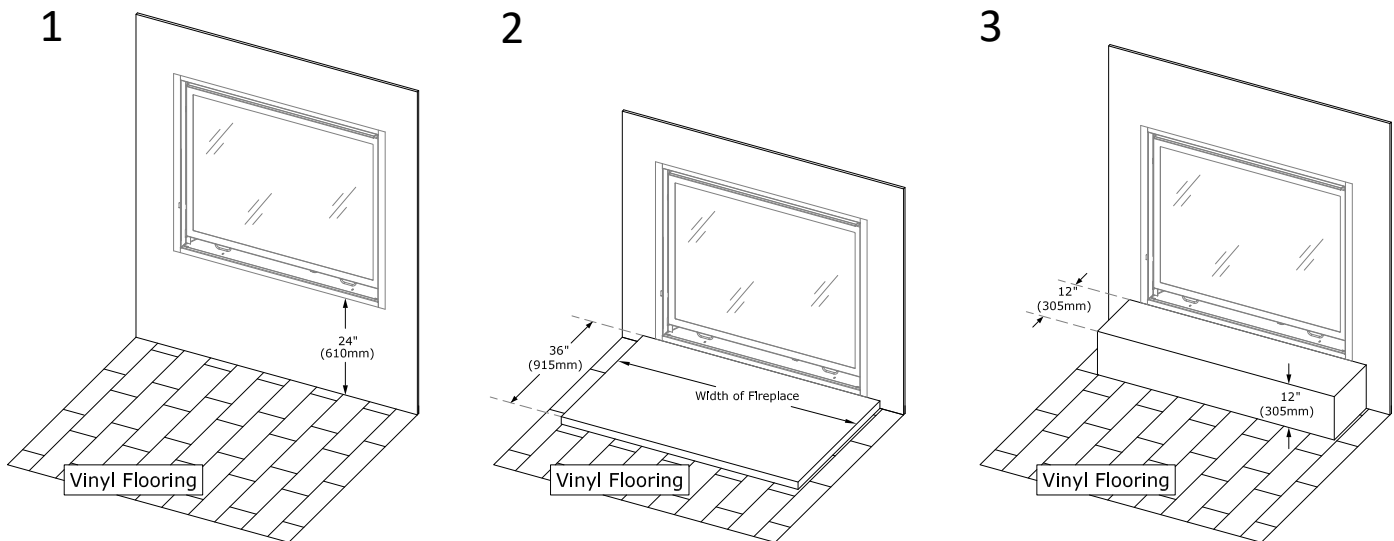


Figure 1 - Vinyl Flooring Recommendations

### Vinyl and PVC Siding Recommendation

#### Installation Warning - Vinyl and PVC Siding

Vinyl and PVC siding is likely to bend, buckle, and deform due to heat reflecting from a fireplace horizontal termination cap. Please refer to vent manufacturer for information regarding vinyl siding protectors.

Kozy Heat assumes no responsibility or liability for damages caused to vinyl or PVC siding in this type of installation.