

FLARE FIREPLACES | LEG SETUP SPECIFICATION MANUAL

CLICKABLE TABLE OF CONTENTS

TELESCOPIC LEGS	3
LEG MINIMUM AND MAXIMUM HEIGHT – FRONT FACING, SEE-THROUGH, AND PASSAGE.....	4
LEG SETUP – FRONT FACING, SEE-THROUGH, AND PASSAGE	5
LEG MINIMUM AND MAXIMUM HEIGHT – LEFT, RIGHT, AND DOUBLE CORNER	6
LEG SETUP – LEFT, RIGHT, AND DOUBLE CORNER.....	7
LEG MINIMUM AND MAXIMUM HEIGHT – ROOM DEFINER	8
LEG SETUP – ROOM DEFINER.....	9

TELESCOPIC LEGS

All **Flare** Fireplaces ship with telescopic legs, leveling feet, and a specialized tool to help level the fireplace once in position. Your telescoping-leg setup will depend on what style fireplace you are installing.

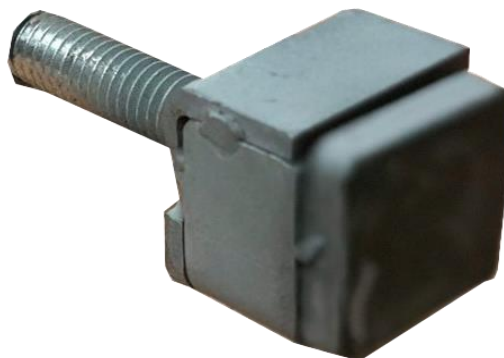
Front Facing, See Through, and Passage style fireplaces will arrive with their telescopic legs already attached, allowing a minimum of 4" clearance under the fireplace. This can be increased to 5" by attaching the leveling screws. The telescopic legs can be extended, allowing a maximum of 19" from the bottom of the glass to the floor. Flare recommends leaving the legs in their standard position and building a platform to achieve custom glass heights. This choice offers more overall stability.

Left, Right, and Double Corner, & Room Definer style fireplaces arrive with the telescopic part of their legs detached. allowing a minimum of 3" clearance under the fireplace. This can be increased to 4" by attaching the leveling screw. Once attached, the telescopic legs can be extended, allowing a maximum of 19" from the bottom of the glass to the floor. Flare recommends leaving the legs in their standard position and building a platform to achieve custom glass heights. This choice offers more overall stability.

TELESCOPIC LEG



LEVELING TOOL

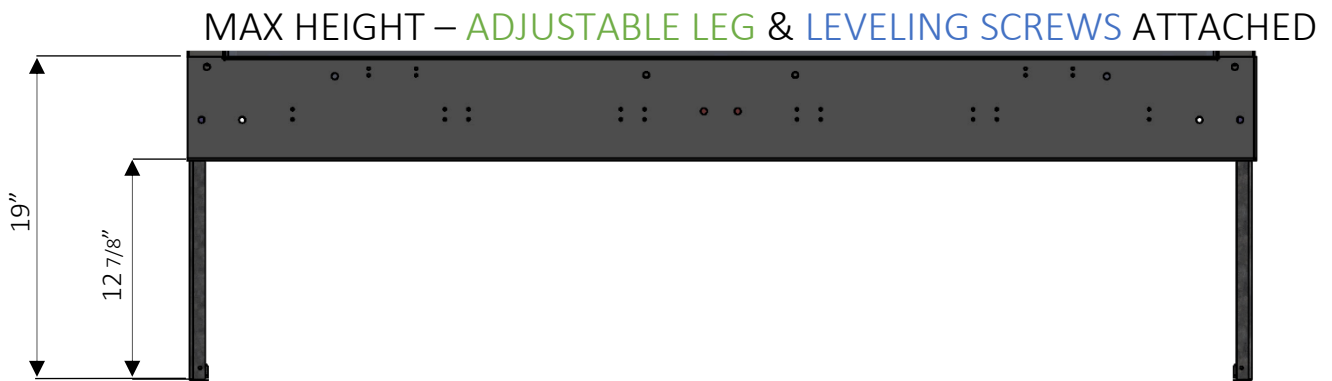
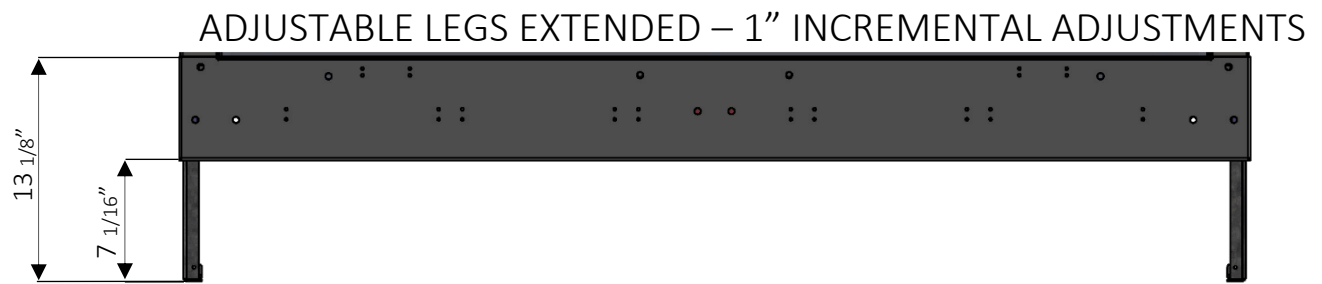
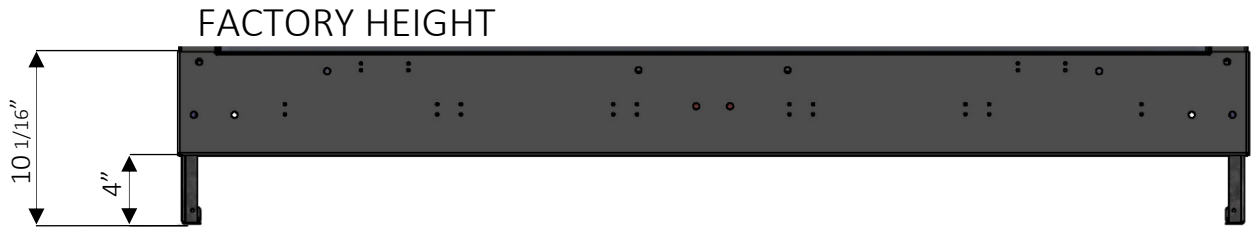


LEVELING SCREW

NOTE: THE LEVELING FEET ARE MEANT FOR MINOR ADJUSTMENTS AND SHOULD NOT BE FULLY EXTENDED OR YOU SACRIFICE STABILITY.

LEG MINIMUM AND MAXIMUM HEIGHT – FRONT FACING, SEE-THROUGH, AND PASSAGE

The Flare Front Facing, See-Through, and Passage style fireplaces ship equipped with their telescopic legs. This supplies a minimum height of 4" off the ground, placing your glass height at 10 1/16". This can be increased to 11" by adding the leveling feet. To achieve the max glass height off the ground of 19", extend your adjustable legs and attach your leveling screws. Included in your telescopic leg kit are 4 screws, 4 leveling screws for fine tuning, and 1 special wrench for adjusting the feet while the fireplace is standing.



LEG SETUP – FRONT FACING, SEE-THROUGH, AND PASSAGE

Step 1 - Release the pin.

Step 2 – Release 2 screws from the leg.

Step 3 – Extend the telescopic leg to the desired length, minimum 4" (That will set the fireplace 10" from the bottom of the glass to the floor).

Step 4 – Tighten three screws to secure the telescopic leg in position. The top pin inserts into the holes only for alignment. The two bottom screws tighten down on the legs.

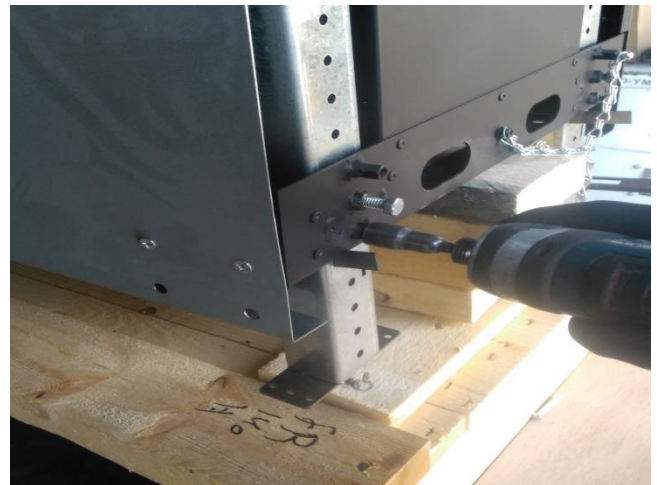
Step 5 – Repeat Steps 1-4 for each on the fireplace so that they are all extended to the same length.

Step 6 – Stand the fireplace up and fine tune the feet with the wrench included so the fireplace is level. Open the screws to raise the fireplace. Close the screws to lower the fireplace.

STEP 1



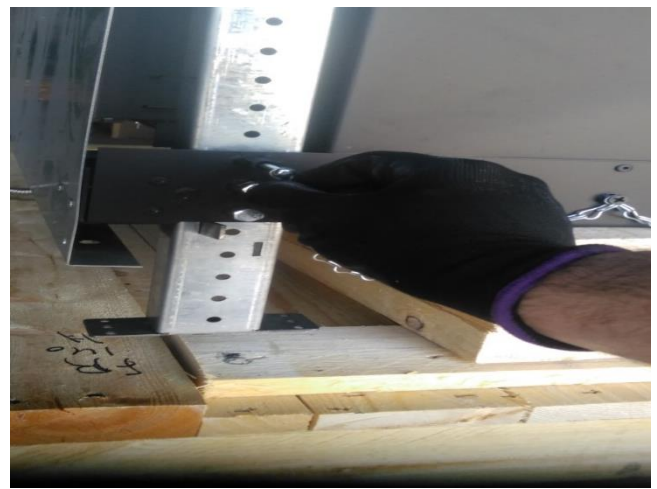
STEP 2



STEP 3



STEP 4



LEG MINIMUM AND MAXIMUM HEIGHT – LEFT, RIGHT, AND DOUBLE CORNER

The **Flare** Fireplace Left, Right, and Double Corner style fireplaces arrive with the telescopic part of their legs detached. Giving you a $2 \frac{15}{16}$ " clearance under the fireplace. This can be increased to $6 \frac{1}{4}$ " by attaching the adjustable legs. To achieve the max glass height off the ground of 19", attach your adjustable legs and leveling screws. Included in your telescopic leg kit are 4 screws, 4 adjustable legs, 4 leveling screws for fine tuning, and 1 special wrench for adjusting the feet while the fireplace is standing.

FACTORY HEIGHT



MINIMUM WITH **ADJUSTABLE LEG** ATTACHED



MAX HEIGHT – **ADJUSTABLE LEG & LEVELING SCREWS** ATTACHED



LEG SETUP – LEFT, RIGHT, AND DOUBLE CORNER

Step 1 - First, identify the correct order to connect the legs. The first adjustable leg that attaches to the fireplace has Rivnuts as seen in the image below. The second adjustable leg has a place for the foot to be screwed in on the bottom as seen in the images below.

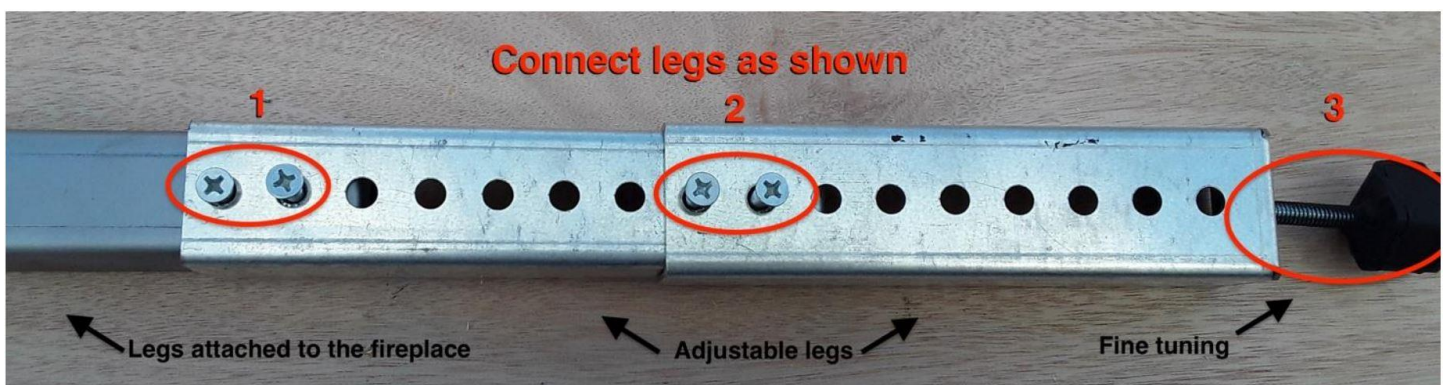
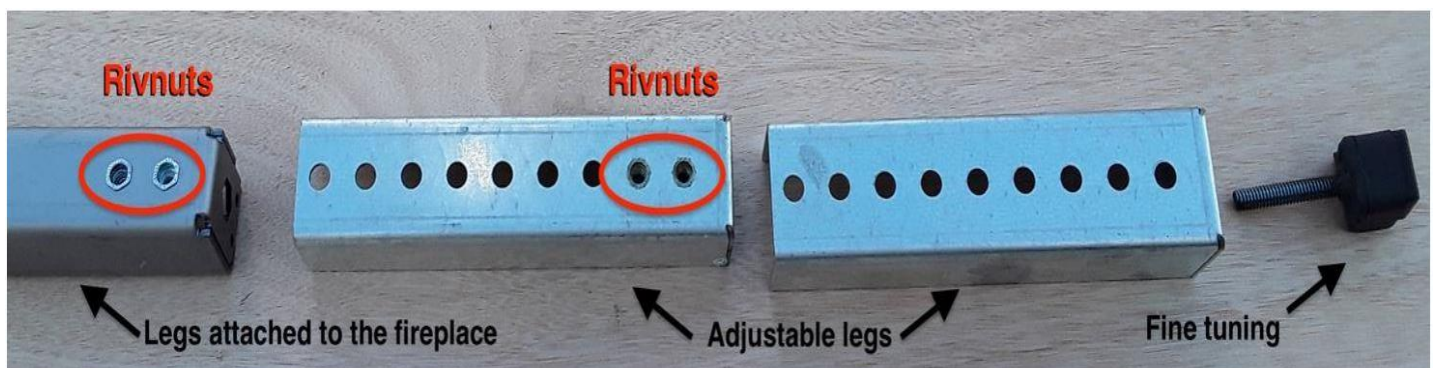
Step 2 - Next, determine which holes to insert the 4 screws so that the fireplace will stand at the desired height after the foot for fine tuning is also screwed in.

Step 3 - Insert the 4 screws into the holes and Rivnuts beneath and tighten. Screw in the foot so that it can later be adjusted to slightly raise or lower the fireplace.

Step 4 - Configure remaining legs to the same height.

Step 5 - Stand the fireplace up and fine tune the feet with the wrench supplied so the fireplace is level. Open the screws to raise the fireplace. Close the screws to lower the fireplace.

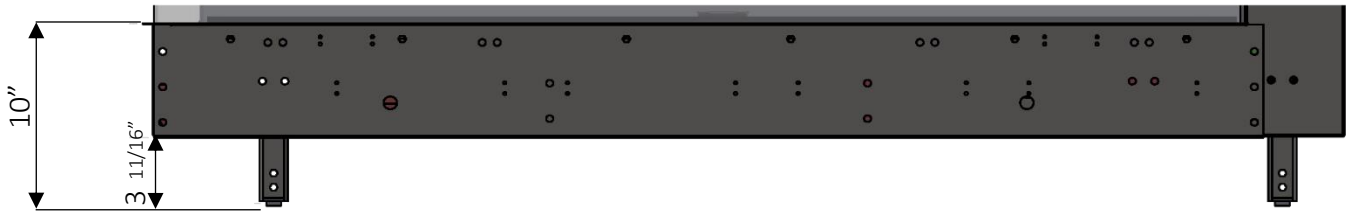
NOTE: Please note all corner units must have their telescopic legs attached to achieve the minimum height required to the underside of the fireplace.



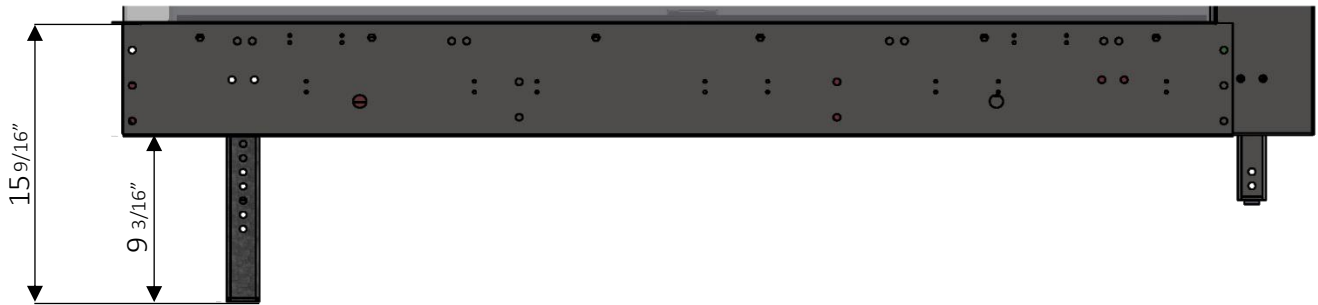
LEG MINIMUM AND MAXIMUM HEIGHT – ROOM DEFINER

The **Flare** Fireplace Room Definer style fireplaces arrive with the telescopic part of their legs detached. Giving you a 3 11/16" clearance under the unit, directly out of the box. This can be increased to 9 3/16" by adding the adjustable legs. To achieve the max glass height off the ground of 19", attach your adjustable legs and leveling screws. Included in your telescopic leg kit are 4 screws, 4 adjustable legs, 4 leveling screws for fine tuning, and 1 special wrench for adjusting the feet while the fireplace is standing.

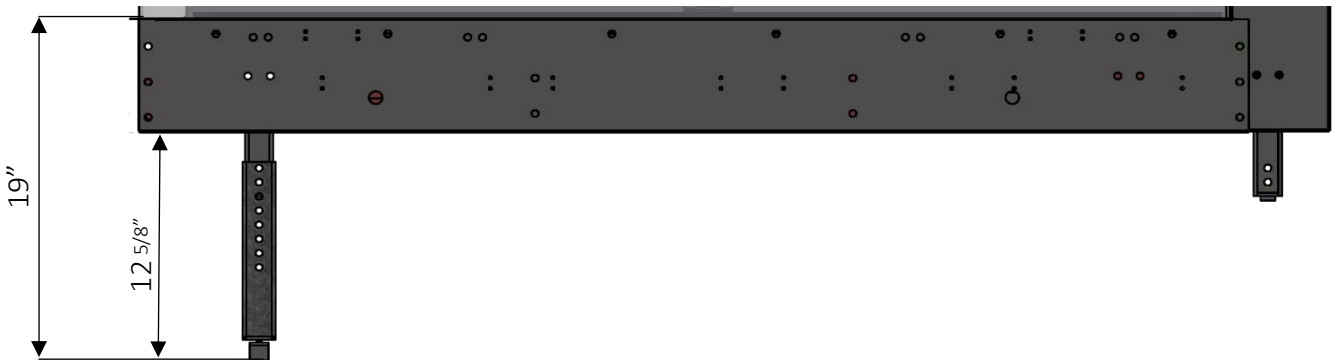
FACTORY HEIGHT



MINIMUM WITH ADJUSTABLE LEG ATTACHED



MAX HEIGHT – ADJUSTABLE LEG & LEVELING SCREWS ATTACHED



LEG SETUP – ROOM DEFINER

Step 1 - First, identify the correct order to connect the legs. The first adjustable leg that attaches to the fireplace has Rivnuts as seen in the image below. The second adjustable leg has a place for the foot to be screwed in on the bottom as seen in the images below.

Step 2 - Next, determine which holes to insert the 4 screws so that the fireplace will stand at the desired height after the foot for fine tuning is also screwed in.

Step 3 - Insert the 4 screws into the holes and Rivnuts beneath and tighten. Screw in the foot so that it can later be adjusted to slightly raise or lower the fireplace.

Step 4 - Configure remaining legs to the same height.

Step 5 - Stand the fireplace up and fine tune the feet with the wrench supplied so the fireplace is level. Open the screws to raise the fireplace. Close the screws to lower the fireplace.

NOTE: Please note all corner units must have their telescopic legs attached to achieve the minimum height required to the underside of the fireplace.

