



SERENE

ZERO CLEARANCE DIRECT VENT GAS FIREPLACE

Unit Illustrated: ZCVRB60N Zero Clearance Direct Vent Gas Fireplace (Natural Gas), MOSTONE Decorative Stones, ZCVRB60PL Porcelain Liners.
(Shown with Vented Chase Option – VL60EG Front Enclose Grill)

 marquis
COLLECTION

SERENE 47 AND 60

FEELING SERENE?

At the end of a busy day, cozy up to the new **SERENE** by Marquis. With beautiful designer details and the highest quality craftsmanship, **SERENE** combines pure comfort with a wow factor that comes from your choice of rocks and driftwood, decorative stones, cannonballs or ember glass. Relax and unwind the **SERENE** way.

Visit www.marquisfireplaces.net to see the latest evolution in fireplaces.

STANDARD FEATURES

- Hi/Low Millivolt or IPI valve system will operate during power failures
- Bronze Glass
- Mobile Home, Bedroom and Bed Sitting Room approved
- Proflame II® Models include remote control – features flame, fan, thermostat, smart-thermostat and LED lights
- Safety Screen Barrier

OPTIONAL FEATURES

Surround: Black or Stainless Steel

Fan Kit: Heat activated with variable speed control

Universal Light Kit: Two Lamps (accent lighting)

Wall Mount Thermostat: Standard on/off or Programmable 5 day (weekday) and 2 day (weekend)

Driftwood Log Sets: Three Piece Driftwood Set (MQ46D), Four Piece Driftwood with Four Rocks (MQRBD1), Three Piece Driftwood Log Set (MQRBD4) or Five Piece Driftwood Set (MQRBD3)

Media Options: Contemporary Rocks, Decorative Stones, Decorative Ember Glass (Glacier Ice, Cobalt Blue, Black, Bronze, White), Ember Chunks or Multi-Colored Cannonballs

Liners: Porcelain Reflective, Fluted Brick (Serene 47), or Stacked Stone (Serene 60)

Remote Controls: Thermostat on/off, Thermostat on/off modulating, Thermostat on/off modulating, fan control and lights

Enclosure Grill Opening:

Front – SERENE 47	46 ¾" W x 2 ⅝" H
Front – SERENE 60	60 ⅝" W x 3 ⅝" H
Sides – SERENE 47/60	15 ¼" W x 6 ⅝" H



PF2



PF1



GFRC



SERENE 47

SERENE 47 PRODUCT SPECIFICATIONS

MODEL	ZCVRB47N/NE MQZCVRB47NE2 [†]	ZCVRB47LP/LPE MQZCVRB47LPE2 [†]
Fuel	Natural	Propane
Gas Control	Millivolt / IPI	Millivolt / IPI
Input Max.	24,500 BTU	24,500 BTU
Input Min.	16,500 BTU	20,500 BTU
FE (P.4.1-15)	55.26% / 57.31%	55.01% / 57.10%
Glass Size	40 5/8"W x 13 7/8"H	40 5/8"W x 13 7/8"H
Venting	4"/7" Flex or 4" x 6 5/8" Hard Pipe	4"/7" Flex or 4" x 6 5/8" Hard Pipe

VENTED CHASE OPTION

WITH OPENINGS (NO GRILLS)

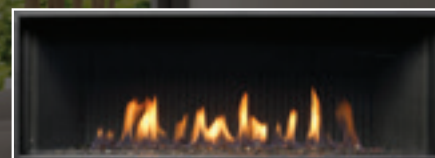
Min. Enclosure Height	70"
Min. Opening Below Ceiling	1-1/4"

WITH GRILLS (MIN. AIR FREE OPENINGS)

Min. Enclosure Height	70"
Grill Opening (Max. distance from top of enclosure)	2"

SERENE 47

Min. 105 sq/in.
70"
1-1/4"
105 sq/in.
70"
2"



ZCVRB47N Zero Clearance Direct Vent Gas Fireplace (Natural Gas), MQEMBER Ember Chunks, MQZCVRB47RLF Fluted Liners.

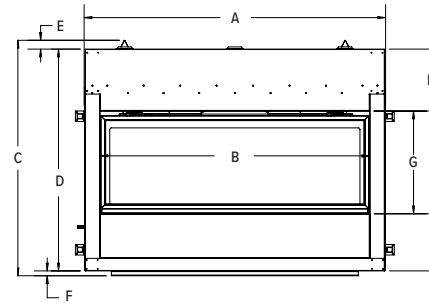
Unit Illustrated: ZCVRB47N Zero Clearance Direct Vent Gas Fireplace (Natural Gas), ZCVRB47S1SS Surround Stainless Steel, MQBRBW Birch Log Set, ZCVRB47PL Porcelain Liners, and MQSTONE10 Decorative Stones.



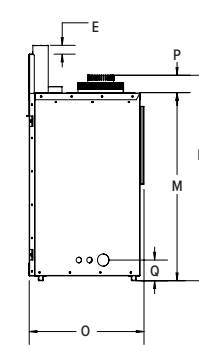
Unit Illustrated: ZCVRB47N Zero Clearance Direct Vent Gas Fireplace (Natural Gas), MQZCVRB47RLF Fluted Liner. (Shown as a Vented Chase – top of chase is open.)

SERENE 47 PRODUCT DIMENSIONS

FRONT VIEW

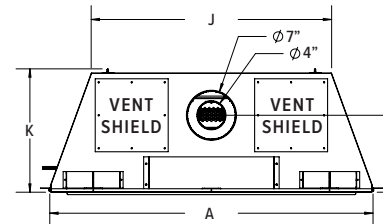


SIDE VIEW



- A 46 5/8"
- B 41 5/8"
- C 38 5/8"
- D 35 1/16"
- E 2 1/4"
- F 3/4"
- G 15 7/8"
- H 11"
- I 8 13/16"
- J 34 5/8"
- K 17 3/4"
- L 11 1/16"
- M 29 1/16"
- N 31 1/16"
- O 17 3/4"
- P 2 1/16"
- Q 3 3/16"

TOP VIEW



FIREPLACE DIMENSIONS

Width	Height	Depth
46 5/8"	38 5/8"	17 3/4"

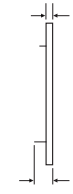
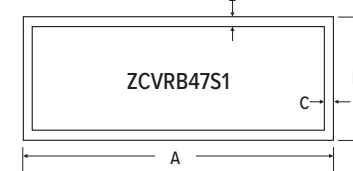
FRAMING DIMENSIONS

Width	Height	Depth
47"	38 3/4"	18 1/4"

*dependent of finishing material used.

OPTIONAL WALL SURROUND

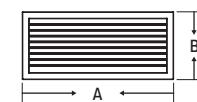
FRONT VIEW



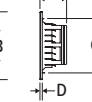
- A 44 5/8"
- B 1 1/2"
- C 1 1/2"
- D 17 3/4"
- E 1"
- F 1 3/4"

OPTIONAL SIDE GRILL – VL60EGS

FRONT VIEW



SIDE VIEW



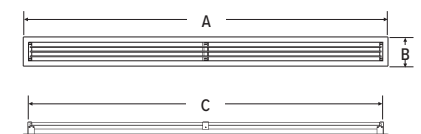
TOP VIEW



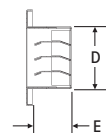
- A 16 3/16"
- B 7 7/8"
- C 6 7/16"
- D 1/4"
- E 15 7/16"
- F 2 9/16"

OPTIONAL FRONT ENCLOSURE GRILL – V46EG

FRONT VIEW



SIDE VIEW



- A 47 13/16"
- B 3 13/16"
- C 46 9/16"
- D 2 1/2"
- E 1 9/16"

SERENE 60

SERENE 60 PRODUCT SPECIFICATIONS

MODEL	ZCVRB60N ZCVRB60NE MQZCVRB60NE2	ZCVRB60LP ZCVRB60LPE MQZCVRB60LPE2
Fuel	Natural	Propane
Gas Control	Millivolt / IPI	Millivolt / IPI
Input Max.	35,000 BTU	35,000 BTU
Input Min.	23,000 BTU	28,000 BTU
FE (P.4.1-15)	55.27%/56.66%	55.27%/56.66%
Glass Size	60"W x 17 7/8"H	60"W x 17 7/8"H
Venting	5"/8"	5"/8"

VENTED CHASE OPTION

WITH OPENINGS (NO GRILLS)

Min. Enclosure Height

Min. Opening Below Ceiling

WITH GRILLS (MIN. AIR FREE OPENINGS)

Min. Enclosure Height

Grill Opening (Max. distance from top of enclosure)

SERENE 60

Min. 200 sq/in.

76"

1-7/8"

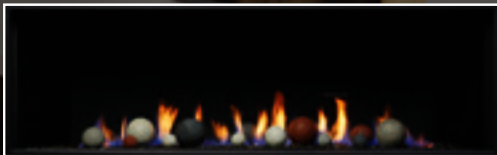
220 sq/in.

76"

3/4"



ZCVRB60N Zero Clearance Direct Vent Gas Fireplace (Natural Gas), MQG5W Glass Media (White x2), ZCVRB60PL Porcelain Liners.



ZCVRB60N Zero Clearance Direct Vent Gas Fireplace (Natural Gas), RBCB1 Cannonballs, ZCVRB60PL Porcelain Liners.

Unit Illustrated: MQZCVRB60NE2 Zero Clearance Direct Vent Gas Fireplace (Natural Gas), ZCVRB60S1BL Surround (Black), MQ46D Driftwood Log Set, MQSTONE10 Decorative Stones, MQVL60RLSB Liner (Stacked Brick). (Shown as a Vented Chase – top of chase is open.)

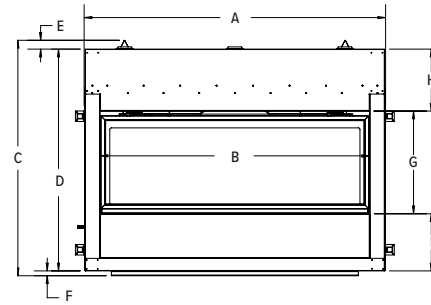


Unit Illustrated: MQZCVRB60NE2 Zero Clearance Direct Vent Linear Gas Fireplace
 (Natural Gas), MQROCK3 Multi-Colored Rock Set, ZCVRB60PL Porcelain Liners.
 (Shown as a Vented Chase with Optional VL60EG – Front Enclosure Grill)

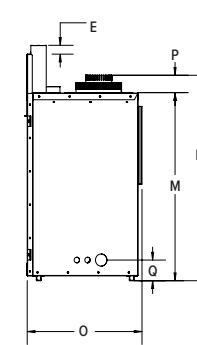


SERENE 60 PRODUCT DIMENSIONS

FRONT VIEW

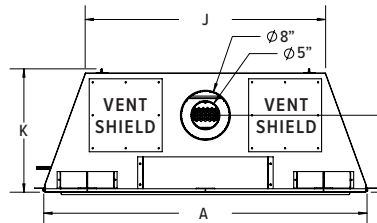


SIDE VIEW



- A 66 3/16"
- B 61 1/8"
- C 39 9/16"
- D 38 5/16"
- E 1/2"
- F 3/4"
- G 19 15/16"
- H 9 9/16"
- I 8 13/16"
- J 53 3/8"
- K 19 3/8"
- L 11 9/16"
- M 33 1/16"
- N 35 3/4"
- O 18 3/4"
- P 2 1/16"
- Q 3 3/16"

TOP VIEW



FIREPLACE DIMENSIONS

Width	Height	Depth
66 3/16"	39 9/16"	19 3/8"

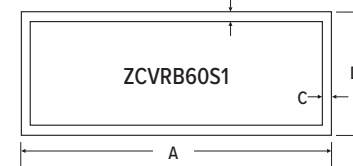
FRAMING DIMENSIONS

Width	Height	Depth
67"	39 3/4"	19 1/4"

*dependent of finishing material used.

OPTIONAL WALL SURROUND

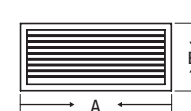
FRONT VIEW



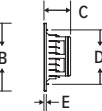
- A 64"
- B 1 1/2"
- C 1 1/2"
- D 23"
- E 3/4"

OPTIONAL SIDE GRILL – VL60EGS

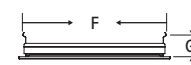
FRONT VIEW



SIDE VIEW



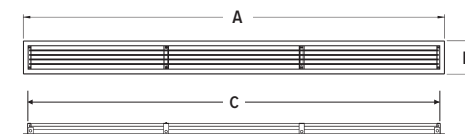
TOP VIEW



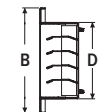
- A 16 3/16"
- B 7 7/8"
- C 2 7/8"
- D 6 7/16"
- E 1/4"
- F 15 7/16"
- G 2 9/16"

OPTIONAL FRONT ENCLOSURE GRILL – VL60EG

FRONT VIEW



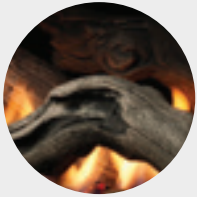
SIDE VIEW



- A 61 3/4"
- B 4 7/8"
- C 60 1/2"
- D 3 1/2"

SERENE 47 AND 60 ACCESSORY OPTIONS

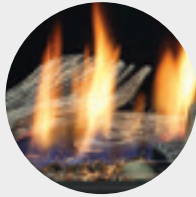
LOG SETS



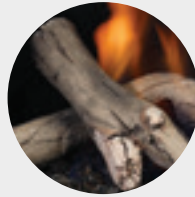
MQ46D
3-Piece
Driftwood Set



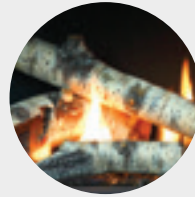
MQRBD1
4-Piece
Driftwood Set
with 4 Rocks



MQRBD2
3-Piece
Driftwood Set



MQRBD4 (3-Piece)
MQRBD3 (5-Piece)
Driftwood Set

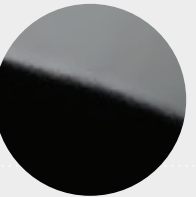


MQRBRW
5-Piece
Birch Log Set

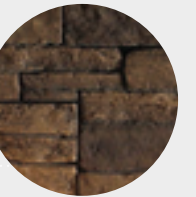
LINERS



Fluted
(ZCVRB47 Only)



**Porcelain
Reflective**

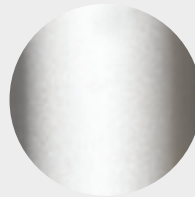


Stacked Brick
(ZCVRB60 Only)

WALL SURROUNDS



Black



Stainless

MEDIA OPTIONS



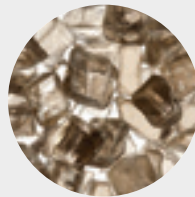
MQG5ZG
Zircon Glacier
Ice Glass



MQG5A
Cobalt
Ember Glass



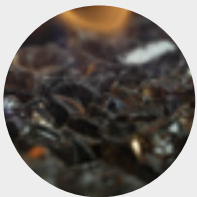
MQG5B
Black
Ember Glass



MQG5C
Bronze
Ember Glass



MQG5W
White
Ember Glass



MQEMBER
Ember
Chunks



MQSTONE
Decorative
Stones



MQROCK2
Natural
Rock Set



MQROCK3
Multi-Colored
Rock Set



RBCB1
Multi-Colored
Cannonballs

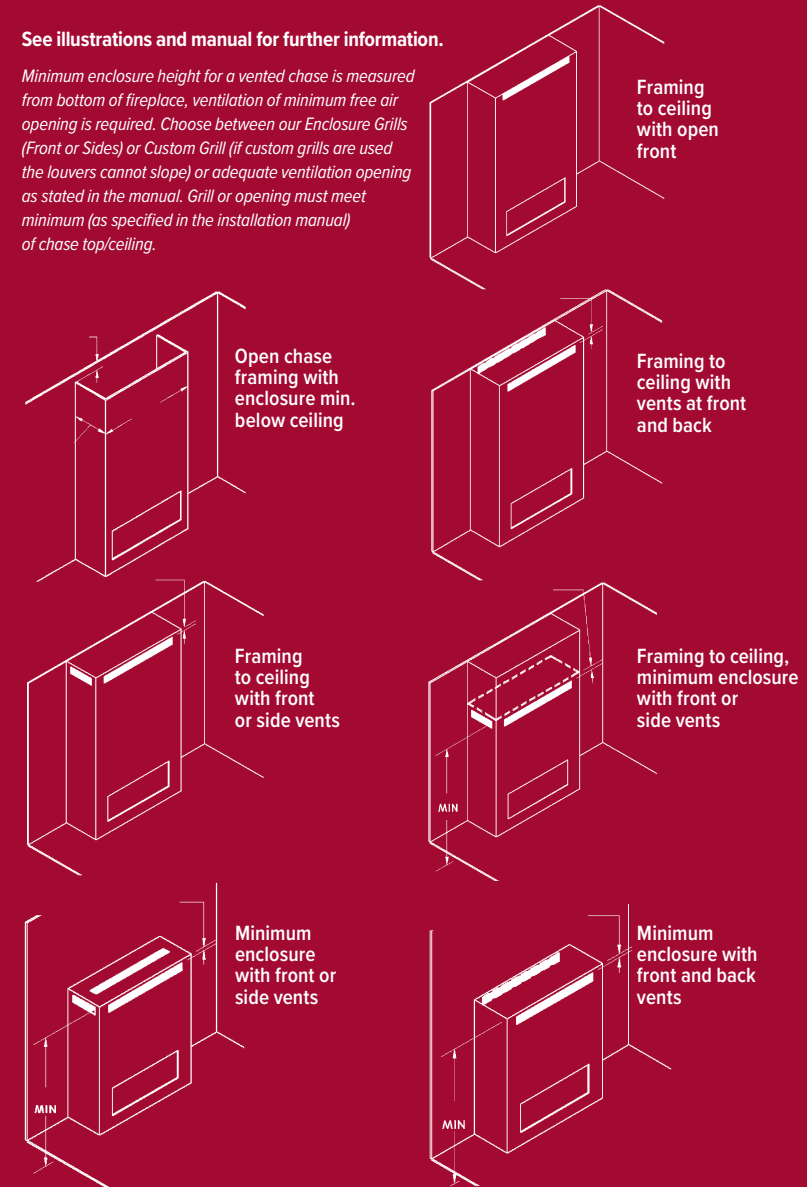
VENTED CHASE OPTION

The chase of the appliance may be vented to achieve Cool Touch Walls or reduced Mantel Clearances. The following options are available to vent the chase:

- The top of the chase can be left open.
- A grill can be installed on the front of the chase.
- If the chase bumps out into the room, side grills can be installed on each side of the chase.

See illustrations and manual for further information.

Minimum enclosure height for a vented chase is measured from bottom of fireplace, ventilation of minimum free air opening is required. Choose between our Enclosure Grills (Front or Sides) or Custom Grill (if custom grills are used the louvers cannot slope) or adequate ventilation opening as stated in the manual. Grill or opening must meet minimum (as specified in the installation manual) of chase top/ceiling.



NOTE: To vent the fireplace chase, removal of vent shields from the fireplace is required.



Unit Illustrated: ZCVRB60N Zero Clearance Direct Vent Gas Fireplace (Natural Gas), ZCVRB60S1SS Surround Stainless Steel, MQEMBER Ember Chunks, MQRBD3 Driftwood Log Set, MQVL60RLSB Liner (Stacked Brick).



Marquis Fireplaces maintains a program of continuous testing, refinement and improvements of all its products. Some aspect of units shown here may be changed at any time without notice or obligation.

Certification: Models ZCVRB47/60 are certified to ANSI Z21.88-2017, vented gas fireplace heater.

Note: Components may have to be ordered separately to create a complete unit. Discuss with your local Marquis Dealer for clarification.



FOR CALIFORNIA RESIDENTS ONLY:
WARNING! This product can expose you to chemicals including Carbon Monoxide, that is an externally vented by-product of fuel consumption, which is [are] known to the State of California to cause birth defects or other reproductive harm. For more information, visit www.P65Warnings.ca.gov.

Crafted entirely in Canada, each Marquis fireplace is built to the highest standards and made to last.

LIMITED LIFETIME WARRANTY



2340 Logan Avenue
Winnipeg, Manitoba, CAN
R2R 2V3
Phone: 204.632.1962
Fax: 204.632.1960
marquisfireplaces.net

Printed in Canada
B104 - 11/19

Canada

ENERGUIDE

Look for the **EnerGuide**
Gas Fireplace Energy
Efficiency Rating in this brochure

Based on CSA P.4.1-15