



Unit Illustrated: IDV44NE2 Direct Vent Insert (Natural Gas), MQLOGF453 Log Set (Driftwood), MQRSP11 Support Platform (Driftwood), MQ44CV3BL Clean View (Black), MQ44SF1BL Door Frame (Black), I44S4432BL Surround (Black), IDV36RLT Brick Liner.

CAPRI 24/34/44

**DIRECT VENT GAS FIREPLACE INSERT
FLUSH MOUNT SERIES**

 **marquis**
COLLECTION

CAPRI

INSERT YOUR STYLE HERE

The **CAPRI** Insert is a wonder, able to transform an existing wood burning fireplace into an updated focal point in any room. This Flush Mount Series is available in three sizes and your choice of liner, oak, driftwood, or birch log set, decorative stone, or five different colors of crushed glass media.

With so many options, you'll find the **CAPRI** is perfectly attuned to your décor vision.

Visit marquisfireplaces.net to see the latest evolution in fireplaces.

STANDARD FEATURES

- Dual Burner with glowing embers and decorative ash bed
- Millivolt or IPI (Intermittent Pilot Ignition) valve system allows operation during power failure with adjustable flame control
- Heat activated blower with variable speed control
- Heat radiating ceramic glass
- On/Off Rocker switch
- Proflame II Models include Remote Control – features flame, fan, thermostat, and smart thermostat (WIFI Compatibility*): IDV24NE2, IDV24LPE2, IDV34NE2, IDV34LPE2, IDV44NE2, IDV44LPE2 Models only
- IDV24 Proflame II Models include halogen lights: IDV24NE2/LPE2
- Safety Screen Barrier



* Amazon Alexa, Google Home, Smartphone

OPTIONAL FEATURES

Designer Doors and Frames – Black:

For use with CV3 Clean View – Designer Door and Door Frame (34/44 only)

Surrounds – Black:

Picture Frame or Universal

Liners:

Traditional Brick, Herringbone Brick (44 only), Porcelain Reflective (34/44 only), or Fluted (34/44 only)

Media Options:

Decorative Stones, Ember Chunks, Decorative Ember Glass (Glacier Ice, Cobalt Blue, Black, Bronze, White), Natural Rocks, or Multi-Colored Rocks

Log Sets:

Choice of Split Oak, Driftwood, or Birch Log Sets (34/44 only)

Thermostats:

Standard On/Off or Programmable (wall mount)

Remote Controls – Millivolt or IPI PF1:

Thermostat on/off, Thermostat on/off modulating, Thermostat on/off modulating and fan control



Unit Illustrated: IDV34NE2 Direct Vent Fireplace Insert (Natural Gas), MQ34CV3BL Clean View (Black), MQ34DD1BL Designer Door (Black), MQLOGF34 Split Oak Log Set, IDV33RL Refractory Brick Liner (Traditional).



CAPRI PRODUCT SPECIFICATIONS

MODEL	IDV24N / IDV24NE IDV24NE2	IDV24LP / IDV24LPE IDV24LPE2	IDV34N / IDV34NE IDV34NE2	IDV34LP / IDV34LPE IDV34LPE2	IDV44N / IDV44NE IDV44NE2	IDV44LP / IDV44LPE IDV44LPE2
Fuel	NATURAL	PROPANE	NATURAL	PROPANE	NATURAL	PROPANE
Input Max.	24,000 BTU	24,000 BTU	31,000 BTU	28,500 BTU	34,250 BTU	30,000 BTU
Input Min.	16,750 BTU	20,000 BTU	20,900 BTU	23,100 BTU	24,000 BTU	22,840 BTU
Viewing Area	20 ¹³ / ₁₆ " W x 11"H	20 ¹³ / ₁₆ " W x 11"H	25 ⁵ / ₈ " W x 14 ¹ / ₈ " H	25 ⁵ / ₈ " W x 14 ¹ / ₈ " H	29 ⁷ / ₈ " W x 18 ³ / ₈ " H	29 ⁷ / ₈ " W x 18 ³ / ₈ " H
FE (P.4.1-15)	53.53% / 55.58%	57.51% / 59.24%	62.86% / 64.73%	63.63% / 65.63%	60.18% / 61.70%	60.18% / 61.85%
Flue Sizes	3" / 3" or 2" / 3"*	3" / 3" or 2" / 3"*	3" / 3"	3" / 3"	4" / 3"	4" / 3"

*2/3" maximum vertical venting is 25FT

CLEAN VIEW CV1 WITH DOOR FRAME & SURROUND

CLEAN VIEW CV2 WITH SURROUND

CLEAN VIEW CV4 WITH PICTURE FRAME



Unit Illustrated: IDV34NE2 Direct Vent Fireplace Insert (Natural Gas), I34CV1BL Clean View (Black), MQRSP8 Glass Support Platform, MQSTONE Decorative Stones.

Unit Illustrated: IDV44NE2 Direct Vent Fireplace Insert (Natural Gas), MQ44CV2BL Clean View (Black), LOGF36 Log Set (Fiber Split Oak), I44S4432BL Surround (Black), IDV36RLT Refractory Brick Liner (Traditional).

Unit Illustrated: IDV34NE2 Direct Vent Insert (Natural Gas), MQ34CV4PFBL Clean View – Picture Frame (Black), MQ34SF1BL Door Frame (Black), MQRSP8 Glass Support Platform, MQG5A Decorative Ember Glass (Cobalt Blue), IDV33PRL Porcelain Reflective Liner.

IDV24

CLEAN VIEW KITS (REQUIRED) AND SURROUNDS (IF NEEDED)

Minimum Fireplace Opening	Width	Height	Depth
IDV24	24 1/4"	18 1/2"	14"

Clean View Kits	Width	Height	Depth
I24CV1BL (Clean View)**	30 1/2"	21 7/16"	15 1/16"

**Safety Screen Barrier – Standard Mesh.

Surrounds	Width	Height	Depth
I24S3827 (Surround)	37 13/16"	27"	9 1/16"
I24SPF3829 (Surround – Picture Frame)	37 13/16"	28 7/8"	9 1/16"

Universal Surrounds	Width	Height	Depth
I24SU4541 (Surround)	45"	41"	1 1/16"
I24SU4541 (Three Sides*)	45"	35"	1 1/16"

*Must Shear Universal Surround

IDV34

Minimum Fireplace Opening	Width	Height	Depth
I34CV1 / MQ34CV2 / MQ34CV3 / MQ34CV4PF	28 5/8"	21 1/2"	17 3/4"
I34CV6BL	26 1/4"	21 1/2"	15 3/4"

Clean View Kits	Width	Height	Depth
I34CV1BL (Clean View)*	35 1/4"	24 3/16"	13 1/16"
I34CV6BL (Clean View)*	37 5/8"	26 15/16"	2 3/4"
MQ34CV2BL (Clean View)**	35 5/8"	24 1 1/16"	1 3/4"

*Safety Screen Barrier – Standard Mesh.

**Safety Screen Barrier – Invisi-Mesh.

Clean View Kit – with Screen Door or Designer Frame	Width	Height	Depth
MQ34CV3BL (Clean View)*	37 1/8"	25 3/16"	1 1/16"
MQ34DD1BL (Designer Door – Series 1)**			
MQ34SF1BL (Door Frame)**			

*NOTE: When using an MQ34CV3BL a Designer Door or Door Frame is required.

**Safety Screen Barrier – Invisi-Mesh

Clean View Picture Frame	Width	Height	Depth
MQ34CV4PFBL (Clean View)*	37 1/8"	27 3/8"	1 1/16"
MQ34DD1BL (Designer Door – Series 1)**			
MQ34SF1BL (Door Frame)**			

*NOTE: When using an MQ34CV4PFBL a Designer Door or Door Frame is required.

**Safety Screen Barrier – Invisi-Mesh.

Surrounds	Width	Height
I34S3927BL (Surround)	39"	27 5/16"
I34SPF4131BL (Surround – Picture Frame)	41 1/8"	31 3/8"
I34SU4541BL (Universal – Picture Frame)*	45"	41"
I34SU451BL (Three Sides)	45"	35"

*Trim to Size

IDV44

Minimum Fireplace Opening	Width	Height	Depth
I44CV1 / MQ44CV2 / MQ44CV3	32 7/8"	25 3/4"	18"

Clean View Kits	Width	Height	Depth
I44CV1BL (Clean View)**	39 9/16"	28 1/2"	13 1/16"
MQ44CV2BL (Clean View)**	39 5/8"	29 1/16"	1 3/4"

**Safety Screen Barrier – Standard Mesh.

Clean View Kit – with Screen Door or Designer Frame	Width	Height	Depth
MQ44CV3BL (Clean View)*	41 7/16"	29 1/8"	1 1/16"
MQ44DD1BL (Designer Door – Series 1)**			
MQ44SF1BL (Door Frame)**			

*NOTE: When using an MQ44CV3BL a Designer Door or Door Frame is required.

**Safety Screen Barrier – Invisi-Mesh.

Surrounds	Width	Height
I44S4432BL (Surround)	44"	32 1/16"
I44SPF4436BL (Surround – Picture Frame)	44"	36"
I44SU4742BL (Universal – Picture Frame)*	47"	42"
I44SU4742BL (Three Sides)	47"	36"

*Trim to Size

VENTING

IDVVT36	Vertical Vent Termination
IDVFK25	Flex Pipe Kit
IDVLCP	Block Off Plate – for Lower Chase
ZDV3FC	Flex Connector 3" Diameter

I23FAK	2/3 Venting Adapter Kit
I23FK25	2/3 Flex Venting Kit – 25 feet

IDVVT36	Vertical Vent Termination
IDVFK25	Flex Pipe Kit
IDVLCP	Block Off Plate – for Lower Chase
ZDV3FC	Flex Connector 3" Diameter

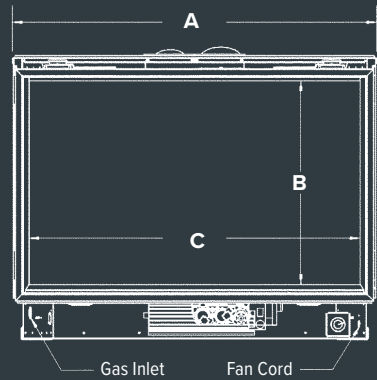
*MG Duravent (Order Kit #46DVA-CL33)

IDVVT43	Vertical Vent Termination
I43FK25	Flex Pipe Kit
I43LCP	Block Off Plate – for Lower Chase
ZDV3FC	Flex Connector 3" Diameter
ZDV4FC	Flex Connector 4" Diameter

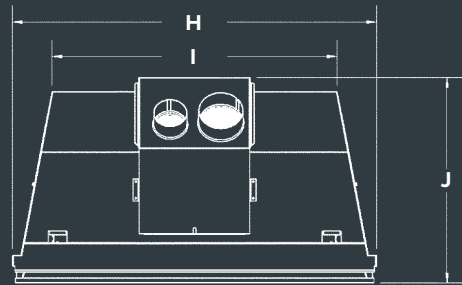
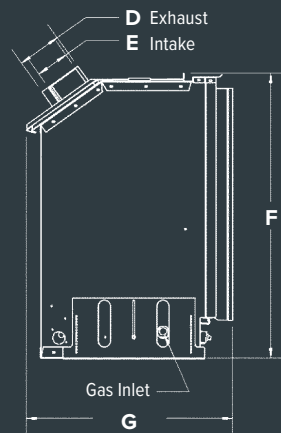
*MG Duravent (Order Kit #46DVA-CL34)

DIMENSIONS

FRONT VIEW



SIDE VIEW



TOP VIEW

	IDV24	IDV34	IDV44
A	24"	28 5/8"	32 7/8"
B	11"	14 1/8"	18 3/8"
C	20 13/16"	25 5/8"	29 7/8"
D	3"	3"	4"
E	3"	3"	3"
F	18 1/2"	21 3/8"	25 3/4"
G	15"	18 1/4"	18 9/16"
H	24 7/16"	28 9/16"	32 7/8"
I	19 1/4"	21 1/4"	25 3/4"
J	15"	18 1/4"	18 9/16"



Unit Illustrated: IDV34NE2 Direct Vent Insert (Natural Gas), MQ34SF1BL Door Frame (Black), MQLOGF33 Driftwood Log Set, MQRSP11 Support Platform for Driftwood, IDV33PRL Porcelain Reflective Liner.

CLEAN VIEW AND SURROUND VARIATIONS

CLEAN VIEW CV3 WITH DOOR FRAME – 34/44



Unit Illustrated: IDV34NE2 Direct Vent Insert (Natural Gas), MQRBD4 Driftwood Log Set (3 Piece), MQRSP11 Support Platform for Driftwood, MQG5C Glass Media Bronze x3, MQ34CV3BL Clean View (Black), MQ34SF1BL Door Frame (Black), IDV33PRL Porcelain Reflective Liner.

CLEAN VIEW CV6 WITH BACKER SURROUND – 34/44



Unit Illustrated: Model IDV34LPE2 Direct Vent Fireplace Insert (Propane), LOGF35 Log Set (Split Oak), I34CV6BL Clean View with Backer Surround (Black), IDV33RL Brick Liner.

CLEAN VIEW CV3 WITH DESIGNER DOOR & SURROUND – 34/44



Unit Illustrated: IDV34NE2 Direct Vent Insert (Natural Gas), MQ34CV3BL Clean View (Black), MQ34DD1BL Designer Door (Black), I34S3927BL Surround (Black), MQRBRW Birch Log Set, MQRSP11 Log Support Platform, MQG5C Glass Media Bronze x3, IDV33PRL Porcelain Liner.

CLEAN VIEW CV2 WITH DESIGNER DOOR & SURROUND – 34/44



Unit Illustrated: IDV44NE2 Direct Vent Insert (Natural Gas), LOGF36 Oak Log Set, MQ44CV2BL Clean View (Black), I44S4432BL Surround (Black), IDV36RLT Brick Liner.

CAPRI 24



IDV24NE2 Direct Vent Fireplace Insert (Natural Gas),
MQG5W Glass Media (White x2).



IDV24NE2 Direct Vent Fireplace Insert (Natural Gas),
MQG5W Glass Media (White x2), RBCB1 Multi-Colored Cannonballs.



IDV24NE2 Direct Vent Fireplace Insert (Natural Gas),
MQG5W Glass Media (White x2), MQSTONES Decorative Stones.



Unit Illustrated: IDV24NE2 Direct Vent (natural gas) Insert, LOGF24OAK Oak Log Set, IDV24RLT Traditional Brick Liner, I24CV1BL Clean View, I24SPF3829 Picture Frame Surround.



CAPRI 34



IDV34NE2 Direct Vent Insert (Natural Gas), MQRBRW Birch Log Set, MQRSP11 Log Support Platform, MQG5C Glass Media Bronze x3, IDV33PRL Porcelain Liner.



IDV34LPE2 Direct Vent Fireplace Insert (Propane), LOGF35 Log Set (Split Oak), IDV33RL Brick Liner.



IDV34NE2 Direct Vent Insert (Natural Gas), MQRBD4 Driftwood Log Set (3 Piece), MQRSP11 Support Platform for Driftwood, MQG5C Glass Media Bronze x3, IDV33PRL Porcelain Reflective Liner.

CAPRI 44



IDV44NE2 Direct Vent Fireplace Insert (Natural Gas), LOGF36 Log Set (Fiber Split Oak), IDV36RLH Refractory Brick Liner (Herringbone).



IDV44NE2 Direct Vent Insert (Natural Gas), MQLOGF453 Log Set (Driftwood), MQRSP11 Support Platform (Driftwood), IDV36PRL Porcelain Liner.



IDV44NE2 Direct Vent Fireplace Insert (Natural Gas), LOGF36 Log Set (Fiber Split Oak).

CAPRI ACCESSORIES

LOG SETS



LOGF24
Fiber Split Oak
CAPRI 24



MQLOGF24
Driftwood
CAPRI 24



LOGF35
Fiber Split Oak
CAPRI 34



MQLOGF33
Driftwood
CAPRI 34
(MQRSP11 required)



MQLOGF34
Fiber Split Oak
CAPRI 34 / 44



LOGF36
Fiber Split Oak
CAPRI 44



MQLOGF453
Driftwood
CAPRI 44
(MQRSP11 required)



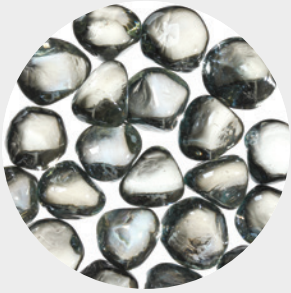
MQRBD4
Driftwood
CAPRI 34 / 44
(MQRSP11 and 15 lbs Glass Media required)



MQRBRW
Birch
CAPRI 34 / 44
(MQRSP11 and 15 lbs Glass Media required)

MEDIA OPTIONS

IDV34/44 REQUIRES GLASS SUPPORT PLATFORM (MQRSP8) OR ROCK SUPPORT PLATFORM (MQRSP4)



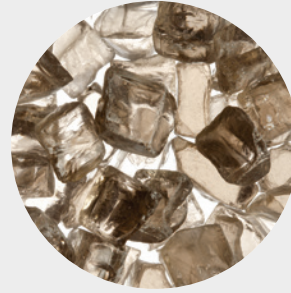
MQG5ZG
Zircon Glacier Ice Glass



MQG5A
Cobalt Ember Glass



MQG5B
Black Ember Glass



MQG5C
Bronze Ember Glass



MQG5W
White Ember Glass



MQEMBER
Ember Chunks



MQSTONE
Decorative Stones



MQROCK2
Natural Rock Set



MQROCK3
Multi-Colored Rock Set



RBCB1
Multi-Colored Cannonballs

LINERS



Traditional Brick
CAPRI 24



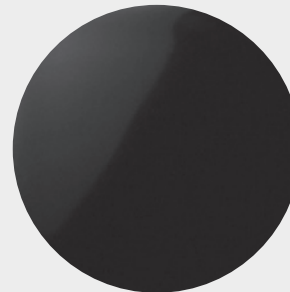
Traditional Brick
CAPRI 34 / 44



Fluted
CAPRI 34 / 44



Herringbone Brick
CAPRI 34 / 44



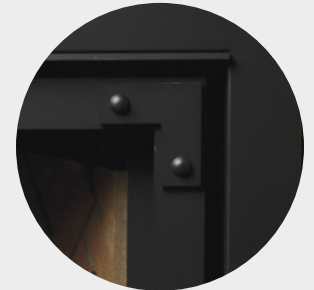
Porcelain Reflective
CAPRI 34 / 44

**DESIGNER
DOORS &
FRAMES**

REQUIRED FOR
MQ34CV3,
MQ34CV4PF
AND MQ44CV3



Designer Frame
CAPRI 34 / 44



Designer Door
CAPRI 34 / 44



Unit Illustrated: IIDV24NE2 Direct Vent Insert (Natural Gas), MQLOGF24DW Driftwood Log Set, I24CV1BL Clean View.



Marquis Fireplaces maintains a program of continuous testing, refinement and improvements of all its products. Some aspect of units shown here may be changed at any time without notice or obligation.

Certification: These Models are certified to ANSI Z21.88-2017 CSA 2.33-2017 Vented Gas Fireplace Heaters. Note: Components may have to be ordered separately to create a complete unit. Discuss with your local Marquis Dealer for clarification.

Canada

ENERGUIDE

Look for the **EnerGuide** Gas Fireplace Energy Efficiency Rating in this brochure

Based on CSA P.4.1-15



FOR CALIFORNIA RESIDENTS ONLY:
WARNING! This product can expose you to chemicals including Carbon Monoxide, that is an externally vented by-product of fuel consumption, which is [are] known to the State of California to cause birth defects or other reproductive harm. For more information, visit www.P65Warnings.ca.gov.

Crafted entirely in Canada, each Marquis fireplace is built to the highest standards and made to last.

LIMITED LIFETIME WARRANTY



2340 Logan Avenue
Winnipeg, Manitoba, CAN
R2R 2V3
Phone: 204.632.1962
Fax: 204.632.1960
marquisfireplaces.net

Printed in Canada
B105 - 10/2022