

SPEC SHEET

Peninsula

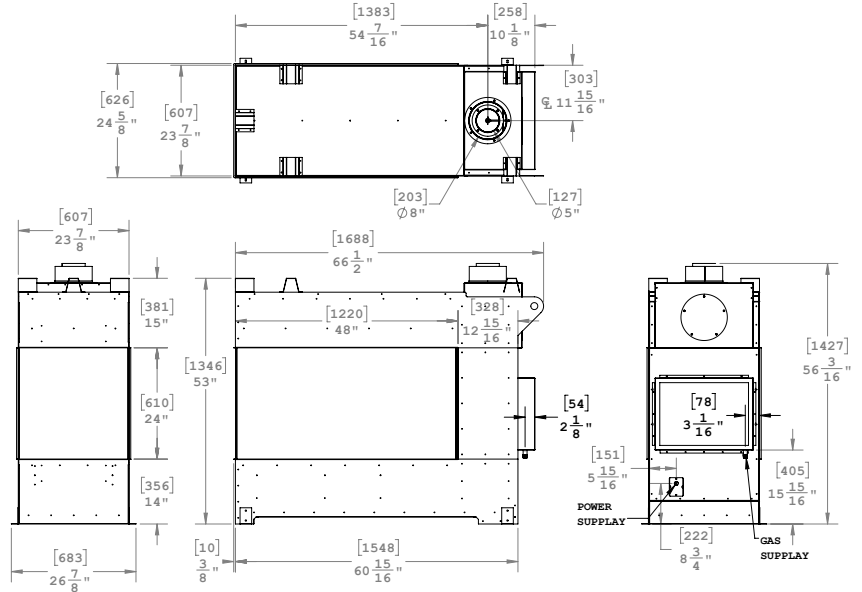
RP424

MONTIGO®

LINEAR GAS FIREPLACE

DIMENSIONS

PART	ACTUAL	FRAMING
FRONT WIDTH	66½"	68½"
BACK WIDTH	66½"	24"
HEIGHT	53"	53"
DEPTH	24"	24"
VIEWING AREA	24" X 48"	N/A



FEATURES

- Glass barrier that meets safety standards - No mesh screens required
- Frameless window design
- Zero clearance to combustibles, including facing
- In-burner accent lighting
- Reflective firebox liner
- Your choice of speckled stones, firestones, or fireglass
- 5" / 8" Venting

TECHNICAL SPECIFICATIONS

RP424 Comes standard with:

- 45,000 BTU burner
- In-burner accent lighting
- Your choice of speckled stones, firestones, or fireglass
- Reflective firebox liner

RP424 Options:

- Your choice of speckled stones, firestones, or fireglass
- Wireless Remote Control Kit - [on/off only]
- Driftwood logset