

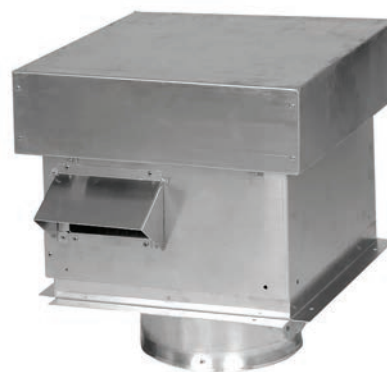
**IMPORTANT:  
THESE INSTRUCTIONS ARE TO REMAIN  
WITH THE HOMEOWNER**

These instructions are supplementary to the Installation and Operating Instructions supplied with the fireplace and should be kept together. Refer to the Installation and Operating Instructions for proper gas supply, safety requirements and operating instructions.



**TOWN & COUNTRY**  
LUXURY FIREPLACES

## **VERTICAL POWER VENT KIT**



## **TCVT.PVCV INSTALLATION AND OPERATING INSTRUCTIONS**



Visit [www. townandcountryfireplaces.net](http://www.townandcountryfireplaces.net) for the most recent version of this manual

## Power Vent Installation

Locate the fireplace as per the main instructions supplied. Make the following modifications to add the components used with the Power Vent kits. This kit can only be used in conjunction with the “B”, “C” & “D” series versions of Town and Country Fireplaces. This installation must conform with local codes or, in the absence of local codes, with the Natural Fuel Gas Code, ANSI Z223.1/NFPA 54, or the Natural Gas and Propane Installation Code, CSA B149.1.

All electrical installation should be performed by a qualified electrician to national codes (CSA C22.1, ANSI/NFPA 70) and/or local electrical codes.

**under no circumstances shall a rheostat be used to alter the voltage supply to this unit.**

## Contents of Power Vent Kit

ITEM	PART No.	DESCRIPTION	QTY
1	TCVT.502462	Power Vent Terminal	1
2	TCVT-8074	Vertical Rain Cap	1
3	TCVT-8075	Vertical Standoff	1
4	8082.001	Flashing	1
5	8085	Drip Shield	1

Note: The adapter kit TCVT.PVKIT is required for all units except the TCWS.54CSTE.

## Power Vent

### VENTING CONFIGURATIONS

Maximum vent length is 110 ft plus six 90-degree elbows or combination of other elbows equaling 90-degrees, with a maximum 66 foot vertical rise.

Minimum vent length is 3 ft plus one 90-degree elbow. The vent can be installed with any combination of rise and run between the figures including up to 3 ft below the unit. Ensure vent pipe is properly supported.

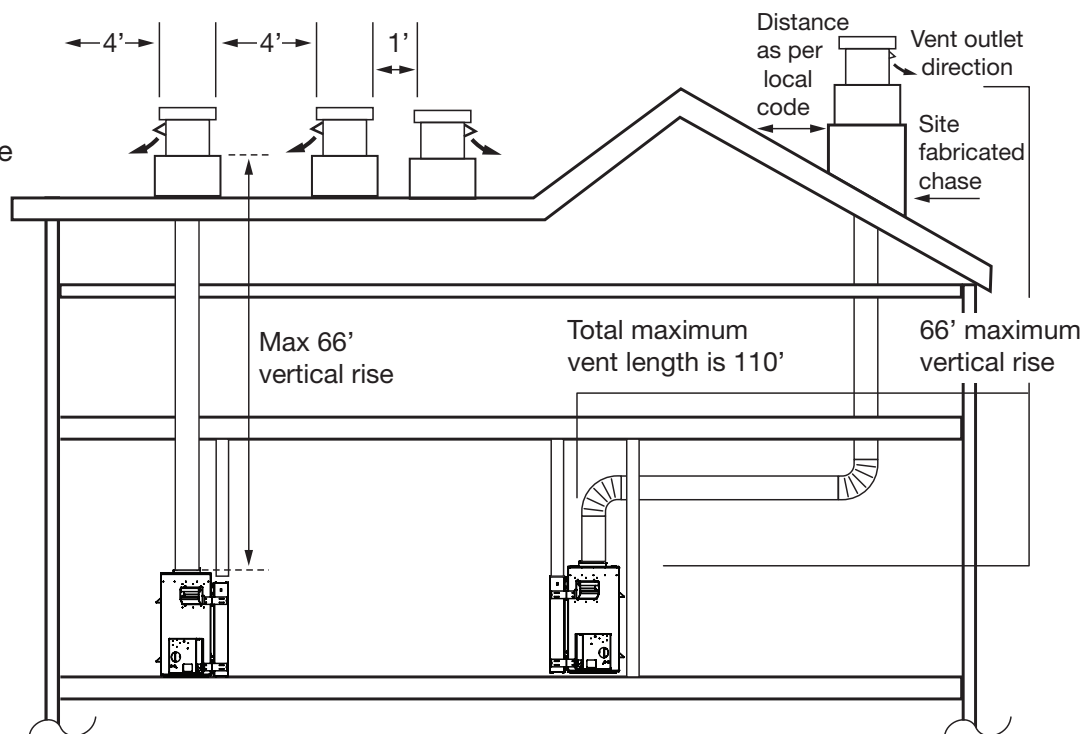


Figure 1: Power vent configurations.



## Minimum Clearances to Combustibles

Vertical vent pipe: 1.5 in. (38mm)

Horizontal vent pipe:	Top	1.5 in. (38mm)
	Sides	1.5 in. (38mm)
	Bottom	1.5 in. (38mm)

All other clearances are as per the fireplace installation instructions.

## Vertical (Through Roof) Venting

### VENT PIPE

This kit uses either Simpson DuraVent GS direct vent pipe, Secure Vent direct vent pipe, Selkirk Direct-temp vent pipe or ICC Excel Direct vent pipe with a 5" inner pipe and an 8" outer pipe. For part numbers see the table of venting components on page 10 of this manual.

**CAUTION: The adjustable vent restrictor located on the underside of the firebox top must be fully open.**

The vertical standoff can only be installed on a flat surface. Sloped surfaces require the construction of a chase which provides the minimum interior, square opening of 11" x 11" for the venting and wiring to pass through. Flat roofs may require a chase depending on local codes and roof construction. (If in doubt check with local inspector). The terminal must be located in accordance with the clearances outlined in Figure 1.

### Installation:

All part numbers in the following section are shown in Figure 3.

1. Place the flashing onto the chase and seal using silicone.
2. Put a bead of silicone on the underside of the vertical standoff and place it on top of the flashing. Align the eight holes and secure both parts to the chase using eight #8 x 1 1/2" screws provided.
3. Install the drip shield onto the top of the vertical standoff using a bead of silicone between the two. Do not screw this part in place.
4. Bring the 14-2 electrical wire (not supplied) up through the holes in both the flashing and the drip shield leaving at least 12" of excess wire above the drip shield.
5. IMPORTANT: Attach an appropriate length(s) of the vent to the power vent terminal, sufficient to pass through the chase.

**NOTE: DO NOT CONNECT AN ADJUSTABLE LENGTH VENT PIPE TO THE TERMINAL.**

6. Seal the connection of the first length of pipe at the terminal and any other pipe to pipe joint by both screwing and taping the outside joint using high temperature foil tape.
7. Remove the junction box cover.
8. Remove and discard the exhaust outlet.



9. Apply a bead of silicone on the bottom flange of the power vent terminal.
10. Slide the vent through the drip shield and at the same time thread the electrical lead through the hole in the bottom of the terminal.
11. With the power vent terminal resting on the drip shield, align the eight holes in each of the vertical stand-off, the drip shield and the power vent terminal and then screw them together using the eight #8 x 1/2" stainless screws provided.
12. Join the 14-2 wire lead to the blower wires using the appropriate connectors and attach the ground wire. Reinstall the junction box cover.
13. Install the vertical rain cap over the power vent blower. ALIGN THE EXHAUST OUTLET ON THE POWER VENT TERMINAL WITH THE EXHAUST PORT ON THE VERTICAL RAIN CAP.
14. Secure the vertical rain cap to the power vent blower with the remaining eight #8 x 1/2" stainless screws.

**NOTE: THERE ARE NO PILOT HOLES IN THE BASE OF THE POWER VENT TERMINAL. 1/8" DIAMETER PILOT HOLES SHOULD BE DRILLED USING THE HOLES IN THE VERTICAL RAIN CAP AS A GUIDE.**

**DO NOT SILICONE THE VERTICAL RAIN CAP TO THE POWER VENT TERMINAL AS IT NEEDS TO BE REMOVABLE FOR SERVICING.**

15. Attach the vent adaptor directly to the appliance with three screws (Figure 2).  
Note: The inner pipe does not need to be sealed.
16. Connect one of the high temperature silicone tubes to the upper pressure tap on the adaptor (Figure 2) Secure with the hose clamp provided and route the tube through any hole back to control box. This tube will be connected to the "low" side of the vacuum switch inside the control compartment (Figure 9). Connect the second tube to the lower pressure tap and route to the control box as before. Connect this tube to the remaining port on the vacuum switch. Tubes may touch unit and be trimmed if required. Note: Ensure that there are no blockages in these tubes, as this will cause the control to malfunction.
17. Run the required Simpson Duravent GS / Secure Vent / Selkirk Direct-temp pipe from the adaptor to the terminal assembly. Assemble as per the vent pipe manufacturer's instructions including all shields and firestops.

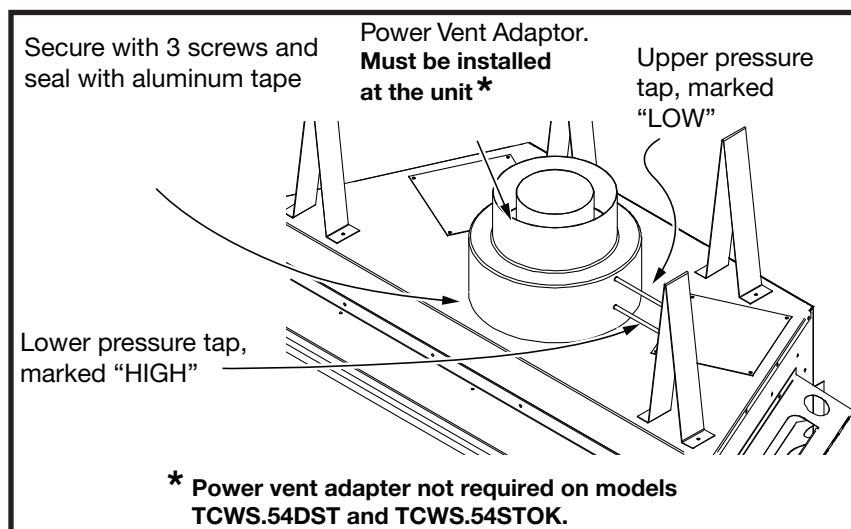


Figure 2: Power vent adapter.



## Vertical (Through Roof) Venting

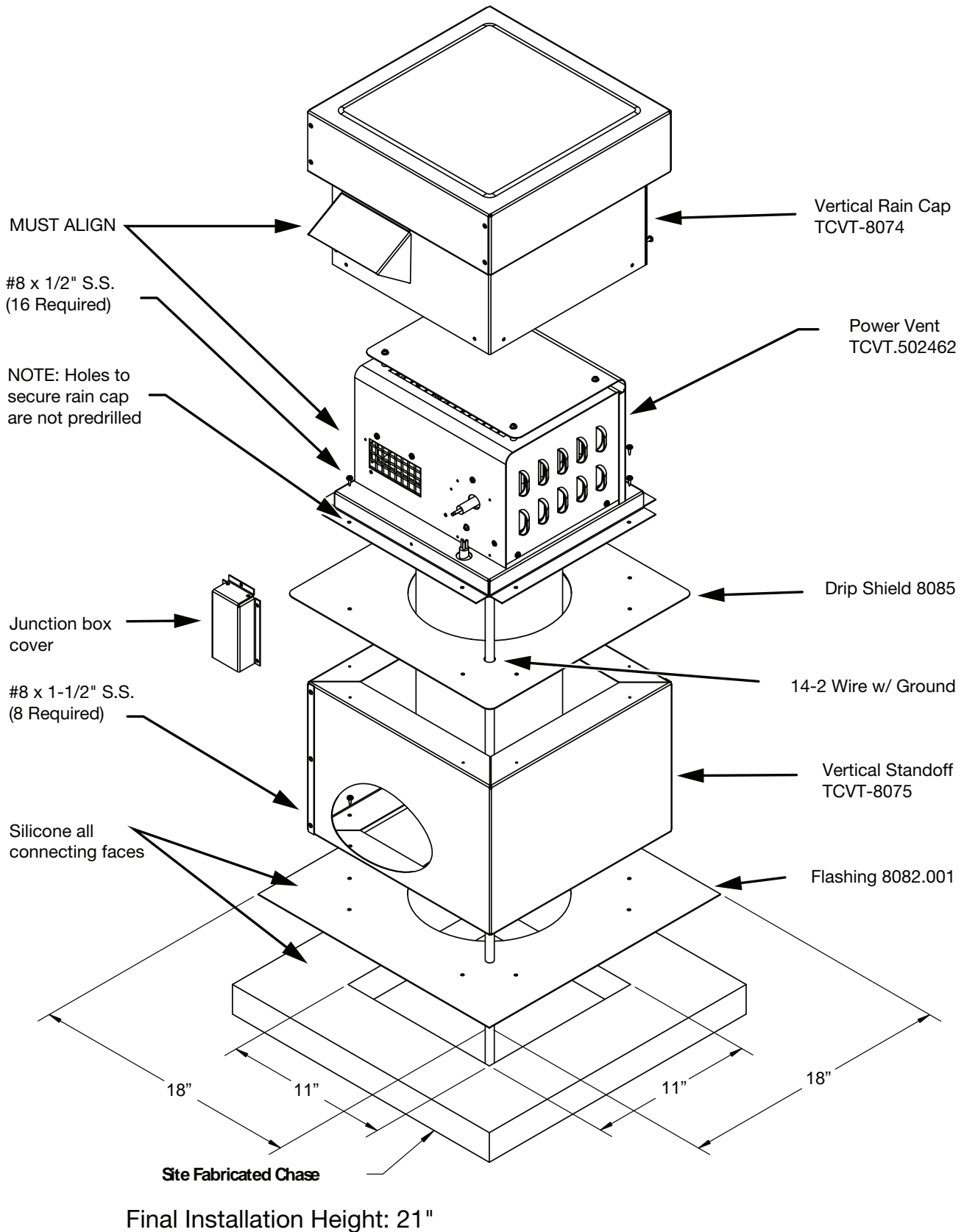


Figure 3: Power vent components.



# Control System Connection

## For “Series C” Fireplaces

The gas control system is located on the right hand side of the firebox behind an access panel and the decorative panel.

1. Remove burner assembly, burner media and decorative panels if already installed (see main installation manual for details).
2. Remove access panel from right hand side of the firebox (Figure 4).
3. Locate and disconnect the spade connectors in the black wire loop on the right side of the module and in the orange wire running from the module to the socket labelled “pilot” on the valve (Figure 5 and Figure 6).
4. Using the jumper wires provided, connect the 120V “hot” supply wire to one of the black wires from the control module. Then connect the “hot” wire from the power vent blower to the other black wire on the control module (Figure 7). The module acts as a switch to turn on the power vent blower. (Also see wiring diagram on Pg.14)

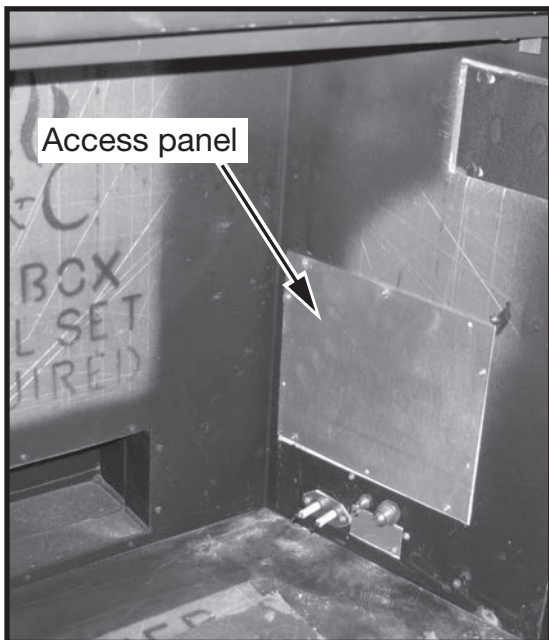


Figure 4: Access panel.

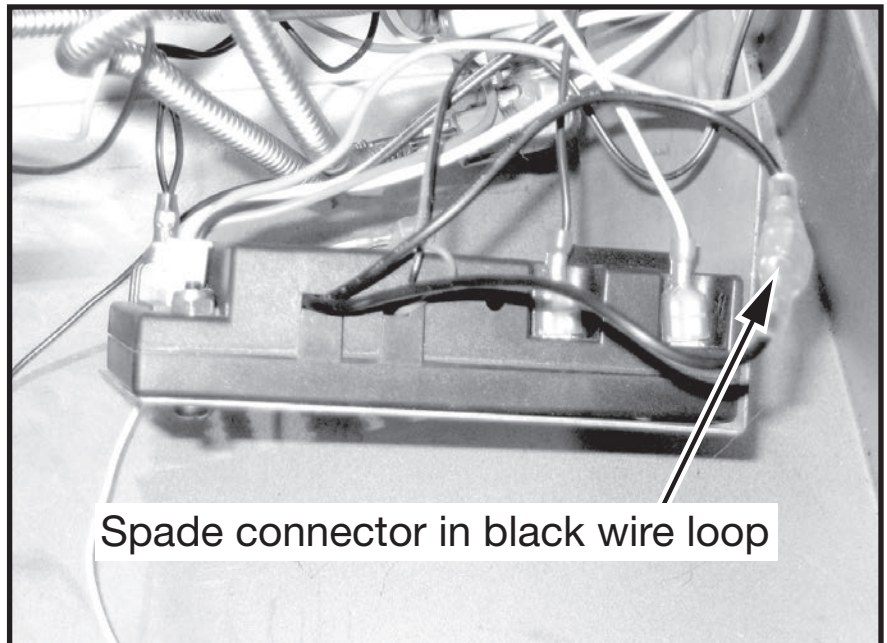


Figure 5: Locating black wire spade connector.

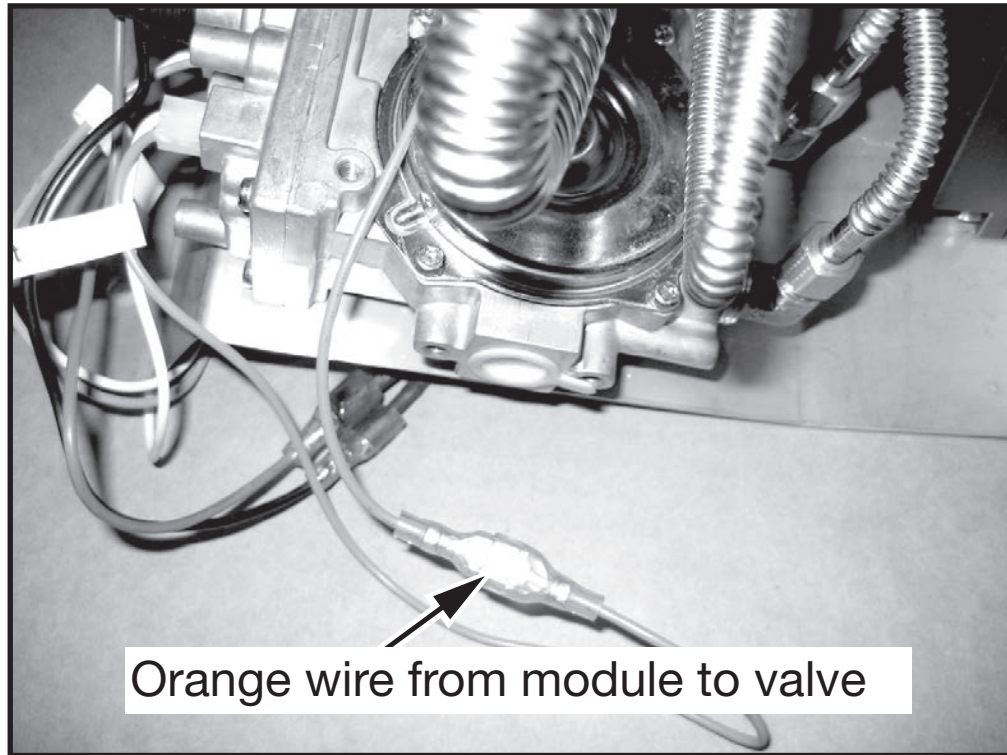


Figure 6: Locating orange wire.

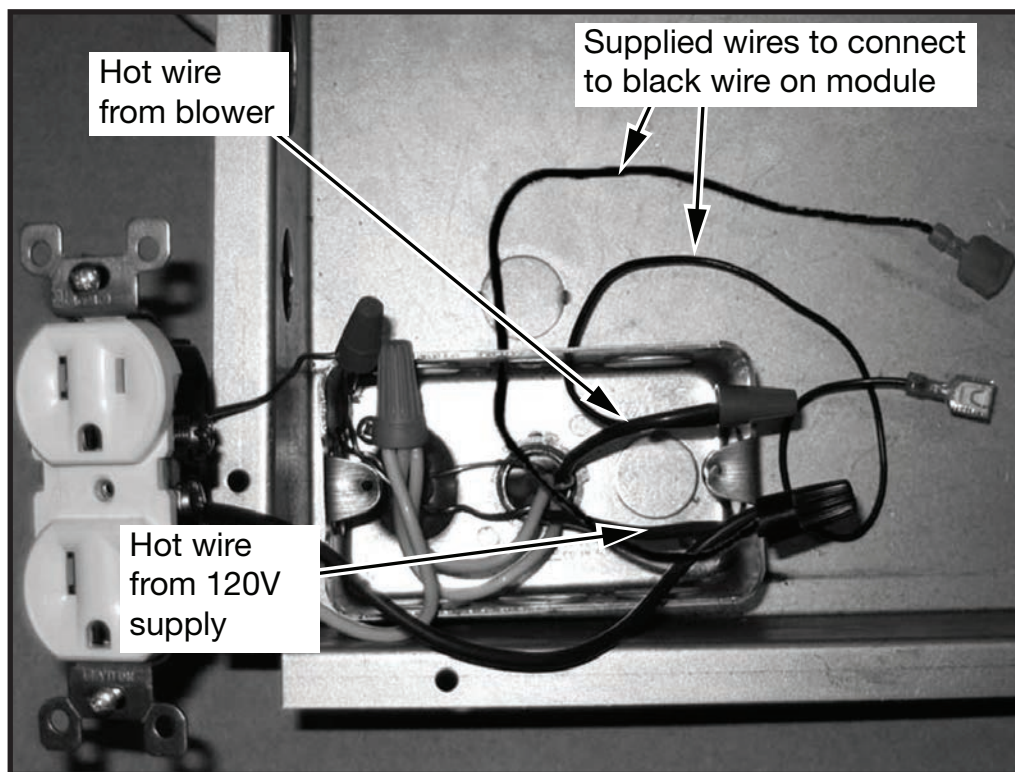


Figure 7: Control module wiring.



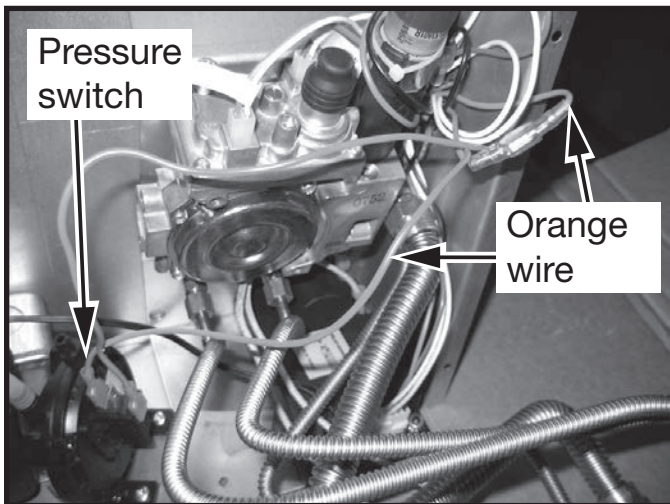


Figure 8: Pressure switch jumper wires.

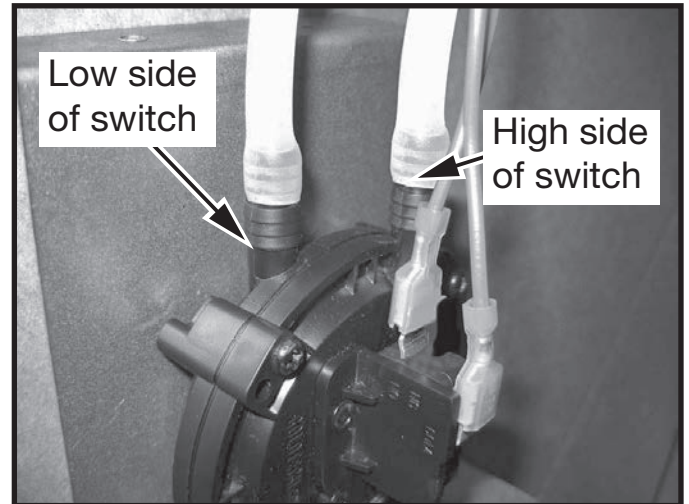


Figure 9: Pressure switch.

5. Connect the pressure switch jumper wires to the orange wire (Figure 8).
6. Attach a silicone tube from the upper pressure tap on the power vent adaptor (Figure 2) to the low port of the pressure switch. Attach the other silicone tube from the lower pressure tap to the high port of the pressure switch.
7. Secure the pressure switch in the control box using the screw provided (Figure 11).
8. Continue with installation and reassemble all of the parts previously removed.

**WARNING:** This switch must be installed in a vertical position and will not function if installed otherwise (Figure 10).

**This power vent system can only run on 115 V AC. Before operating the unit, the battery backup located behind the wall switch receiver must be removed.**

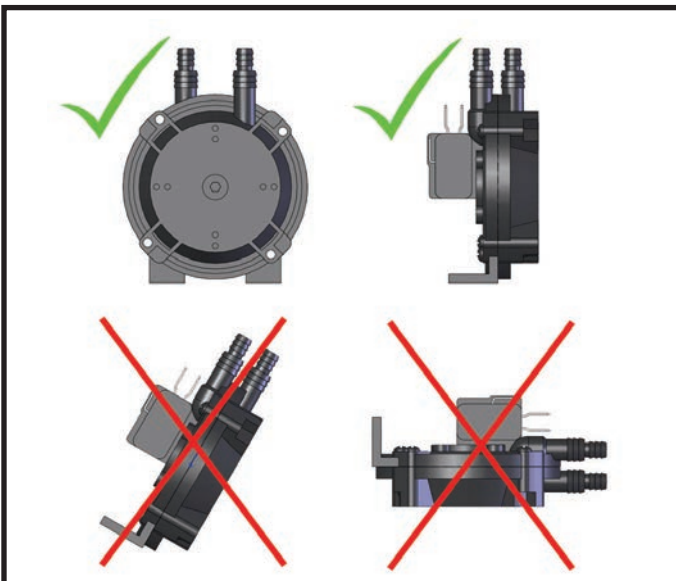


Figure 10: Proper orientation of pressure switch.

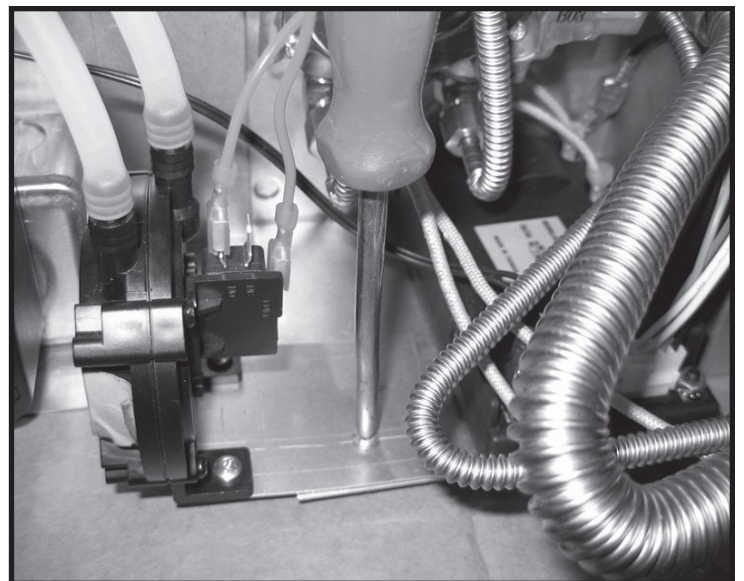


Figure 11: Securing pressure switch.



## Pressure Switch Installation - (TCWS.54CE2 ONLY)

1. Remove pressure switch from the flat bracket and attach to the “Stepped” bracket (Figure 12).
2. Connect the pressure switch jumper wires to the orange wire (Figure 13).

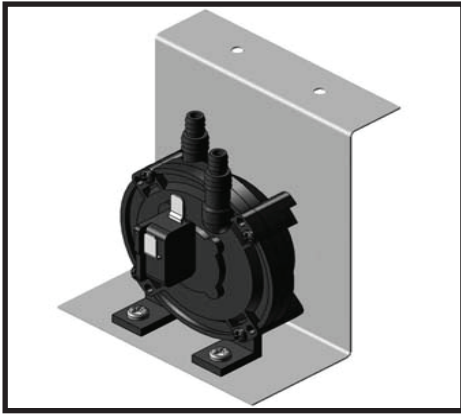


Figure 12: Pressure switch on flat bracket.

This power vent system can only run on 115 V AC. Before operating the unit, the battery backup located behind the wall switch receiver must be removed.

**WARNING:** This switch must be installed in a vertical position and will not function if installed otherwise (Figure 10).

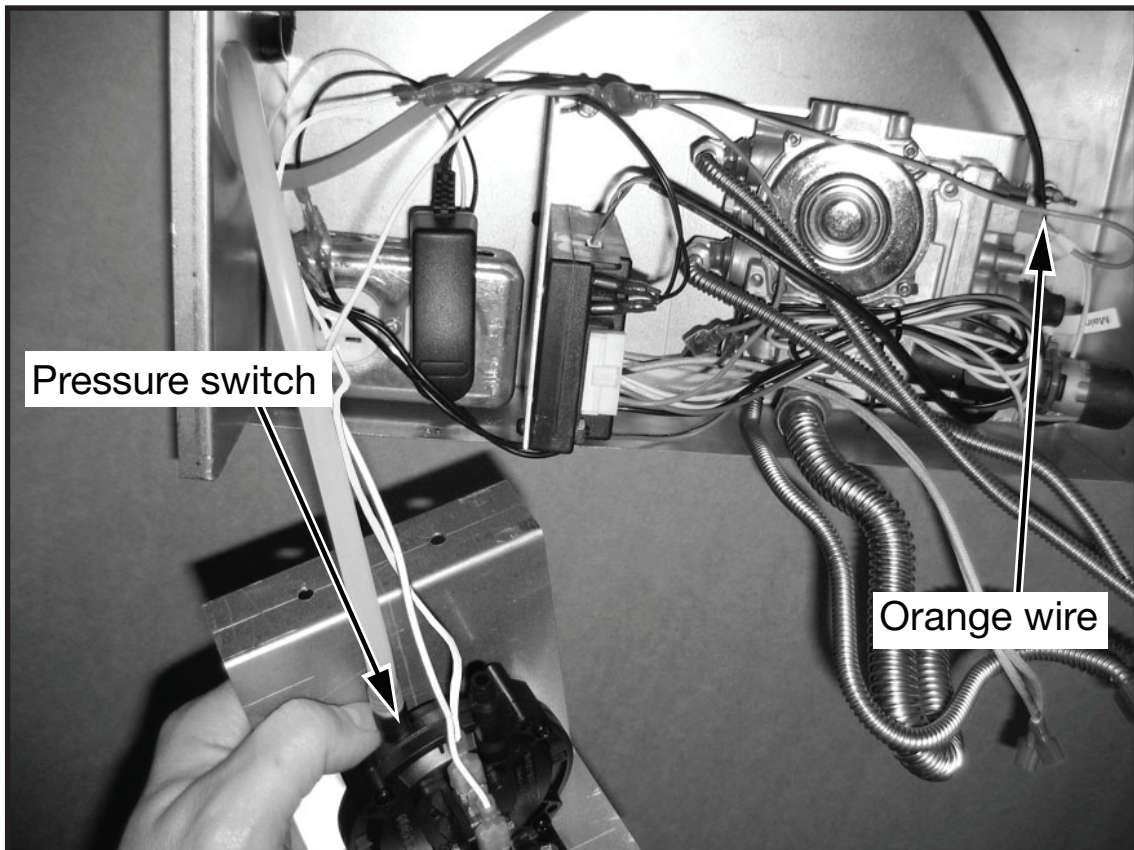


Figure 13: Pressure switch and orange wire.



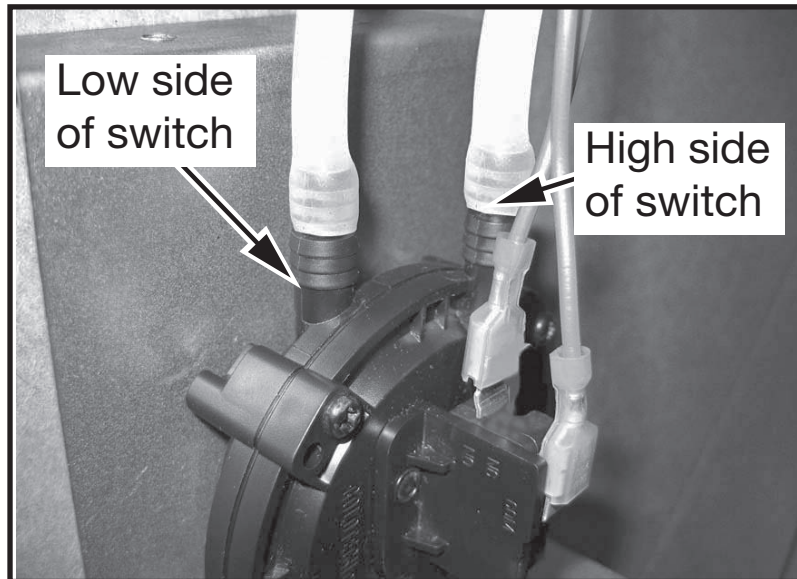


Figure 14: Pressure switch port location.

3. Attach the silicone tube from the upper pressure tap on the power vent adaptor (Figure 2) to the “low” port of the pressure switch. Attach the other silicone tube from the lower pressure tap to the “high” port of the pressure switch (Figure 14).
4. Secure the pressure switch in the control box using the screw provided (Figure 16).
5. Continue with installation and reassemble all of the parts previously removed.

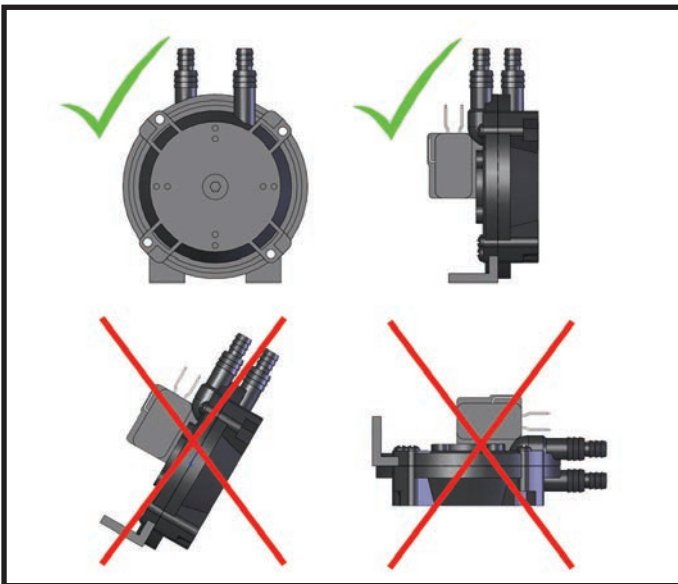


Figure 15: Correct orientation of pressure switch.

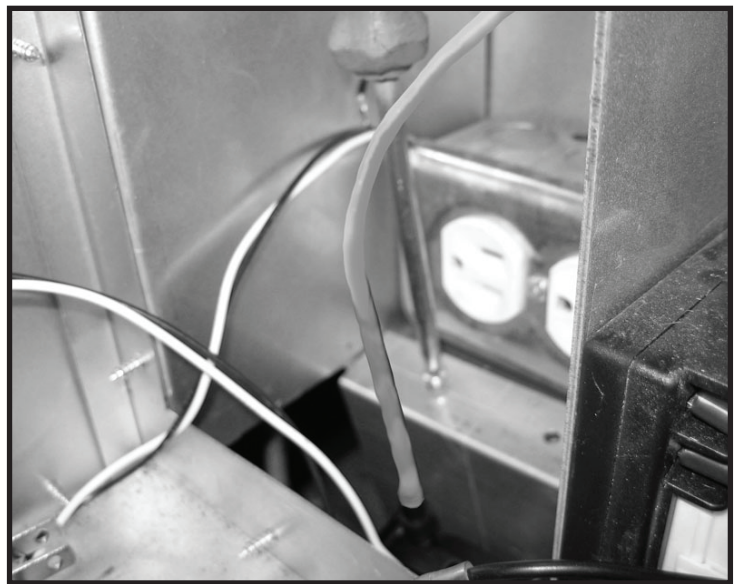


Figure 16: Securing the pressure switch.

## Control System Connection for “Series D” Fireplaces

The gas control system is located on the right hand side of the firebox behind an access panel and the decorative firebox panel (if installed). The fireplace is operated via a wall control and a hand held remote control unit.

The wall control is connected to the fireplace by a 40 ft. communication cable supplied with the fireplace.

### Installation

1. Place the fireplace in the desired location.
2. Remove the window from the fireplace.
3. Remove access panel from right hand side of the firebox (Figure 17).
4. Connect 110 V. AC electrical supply to the wires installed inside the junction box (Figure 18). The fireplace is rated at 110 volts, 60Hz, 0.25A. The optional power vent kit is rated at 115 volts, 60Hz, 1.8A.

The electrical wires can be accessed from both inside and outside the junction box by removing one of the two small access panels (Figure 18 and Figure 19).



Figure 17: Firebox access panel.

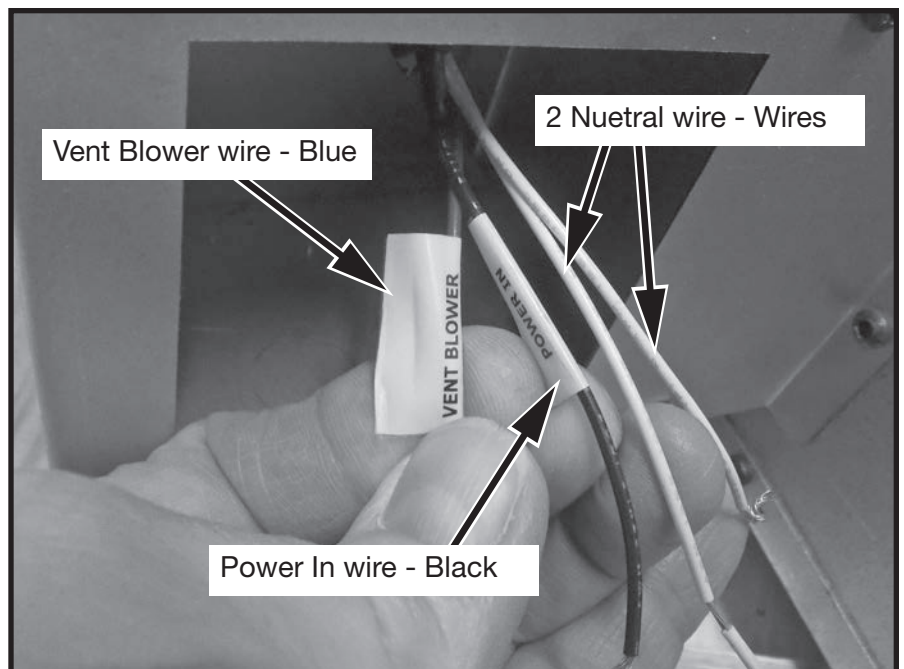


Figure 18: Wiring to power vent at fireplace junction box.



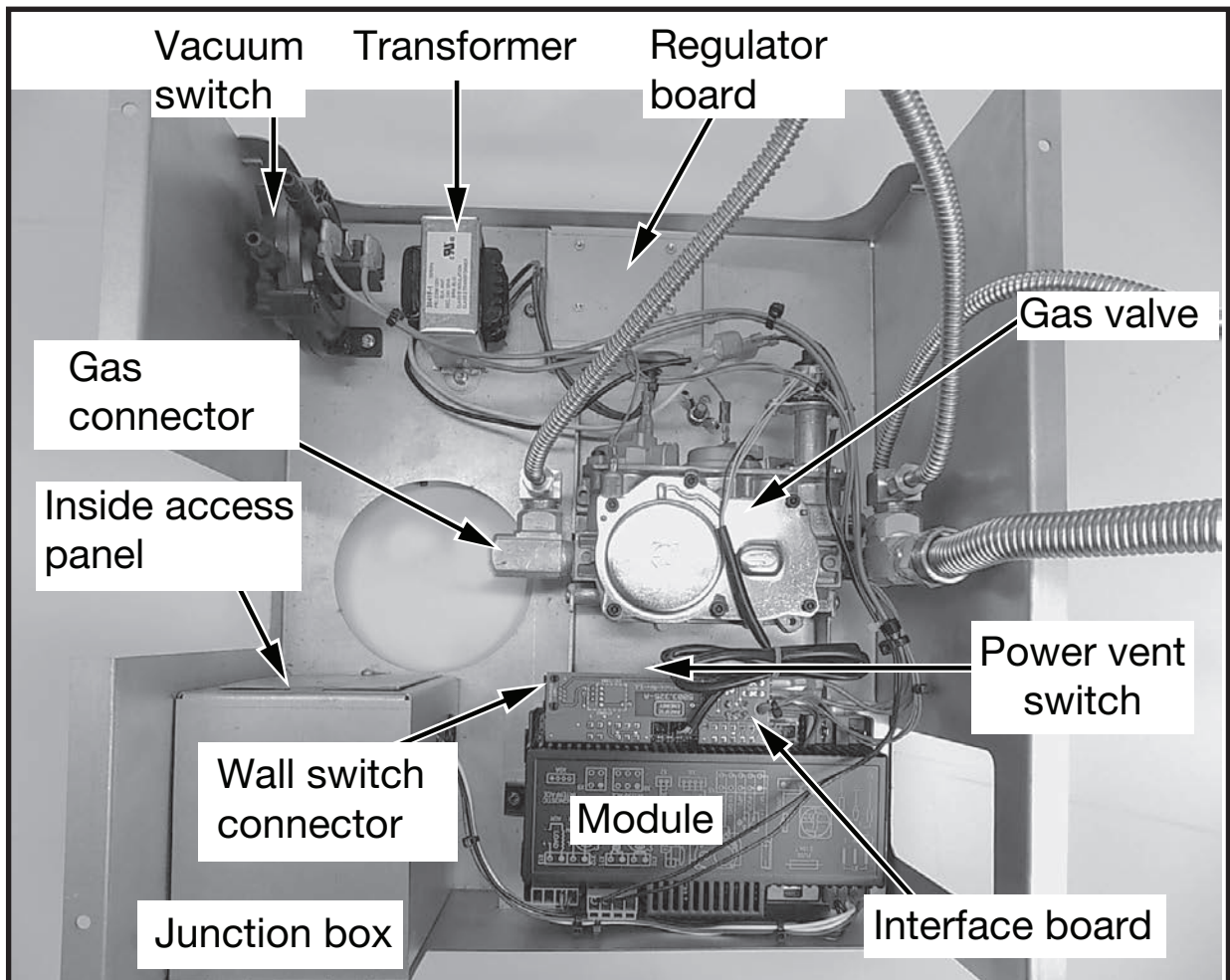


Figure 19: Control box.

5. Connect the gas supply to the valve (Figure 19).
6. Attach one end of the wall switch control cable to the wall control. (not shown), and the other end to the interface board (Figure 19)
7. If not already installed, install the burner using the instructions supplied with the burner kit.
8. Turn on the gas supply and check that all connections are tight and leak free.

## — Pressure switch Connection for “Series D” Fireplaces —

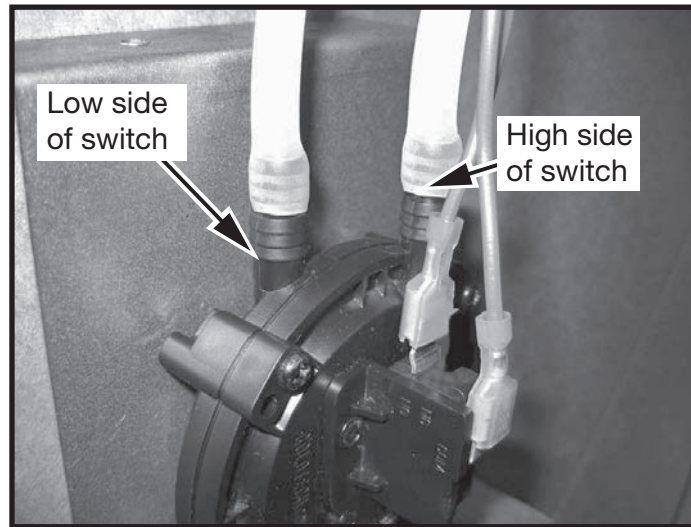


Figure 20: Pressure switch connections.

Attach the silicone tube from the upper pressure tap on the power vent adaptor (Figure 2) to the “low” port of the pressure switch. Attach the other silicone tube from the lower pressure ap to the “high” port of the pressure switch (Figure 20).

## — Selecting Natural Vent and Power Vent Modes —

The NV / PV (Natural Vent / Power Vent) switch (Figure 21) on the interface board (Figure 19) is set according to which type of evacuating vent system is present. If the fireplace is vented without the assistance of a power vent, the switch should be set to “NV”. If using a power vent, “PV” must be selected.

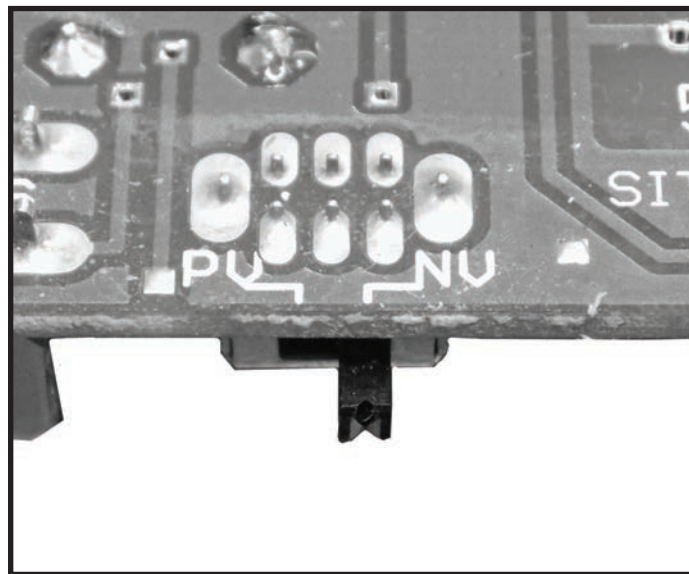


Figure 21: Power vent selection switch.

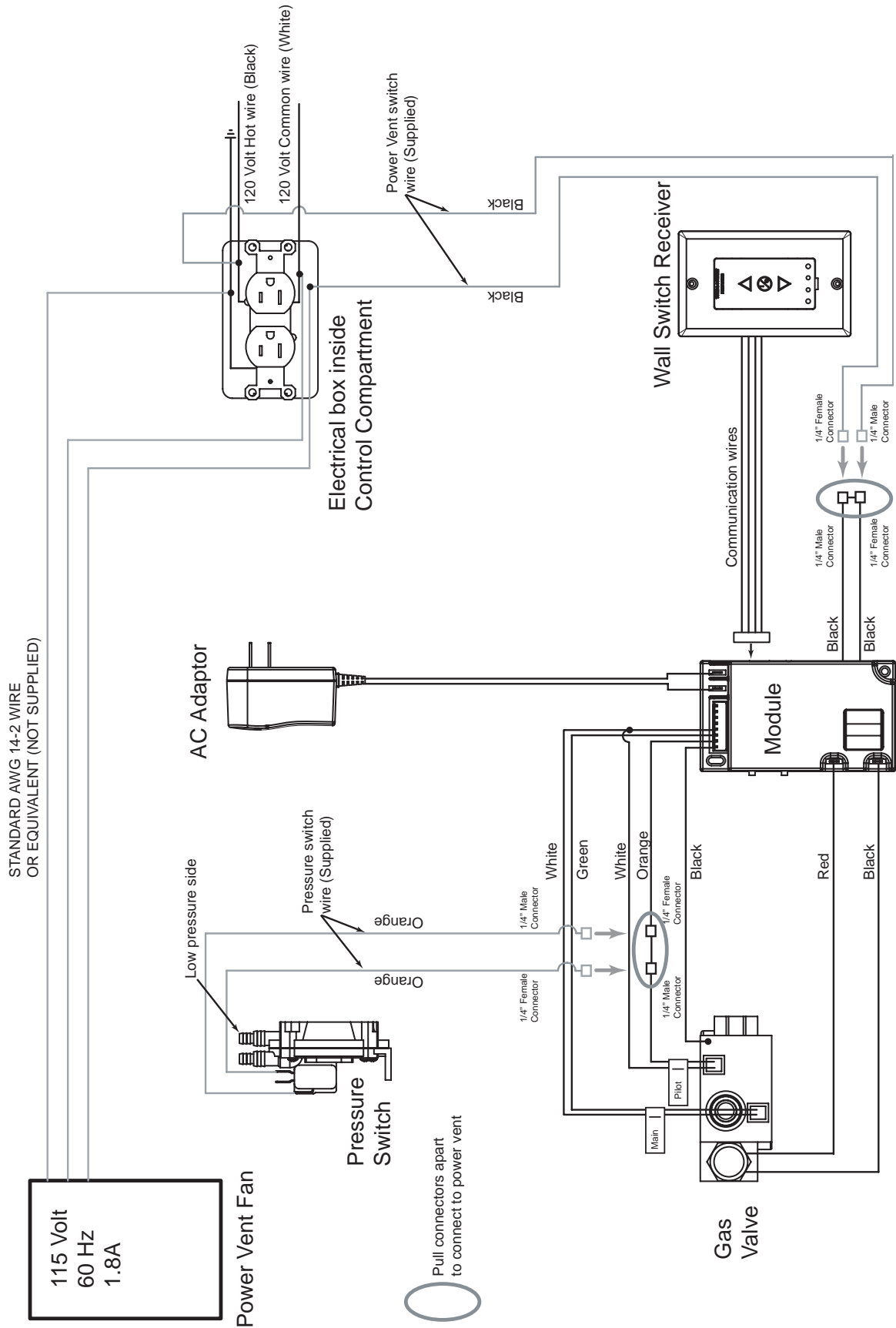
**Note:**  
Do not install  
batteries in the  
wall switch when  
using a power  
vent

### Important Note:

**When switching between NV and PV, both the electrical power supply to the fireplace must be turned off and the backup batteries removed to properly re-set the module.**

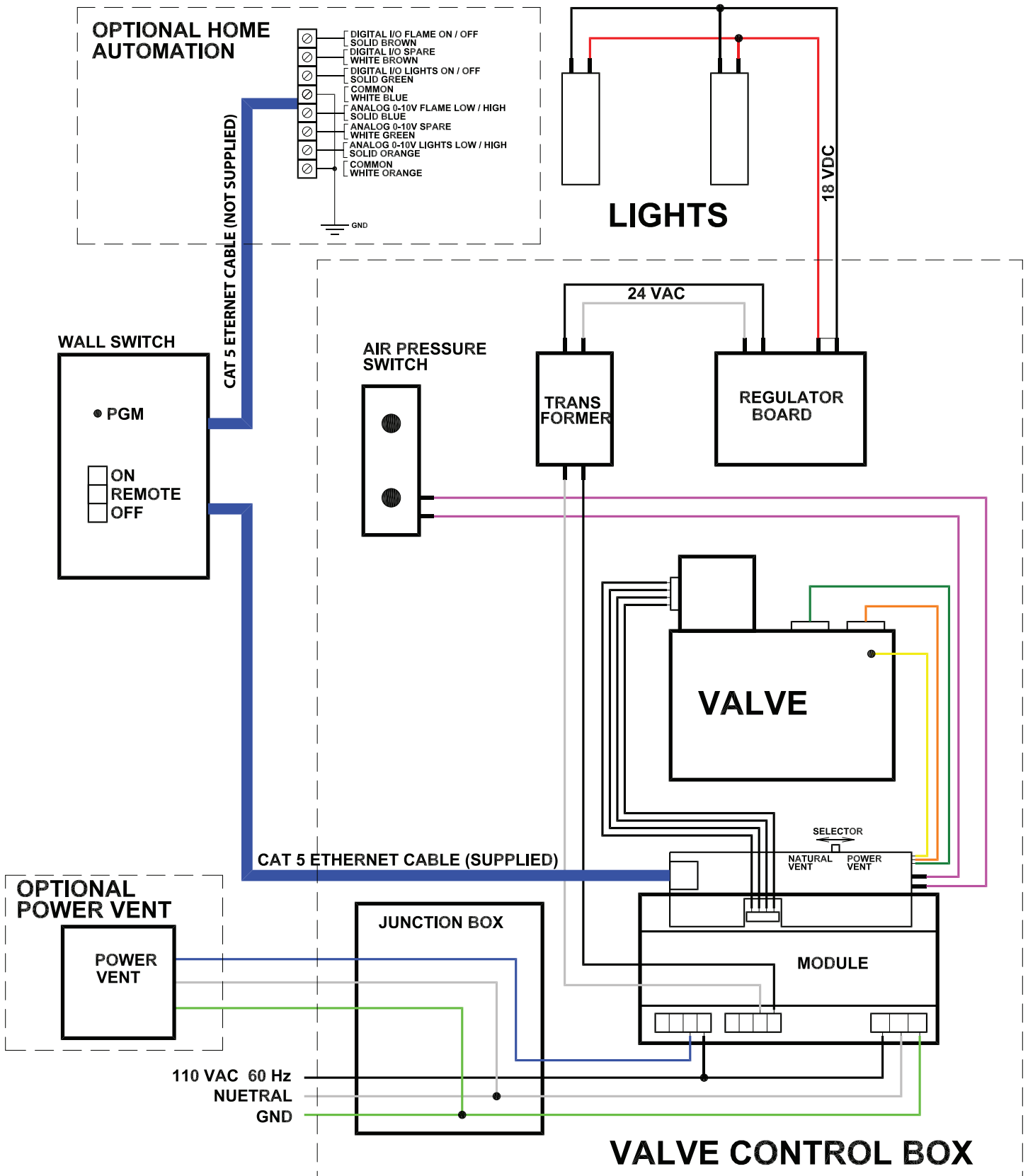
# Series C Wiring Diagram

Wiring the Power Vent Kit provided by Town & Country





# Series D Wiring Diagram



# Replacement Parts

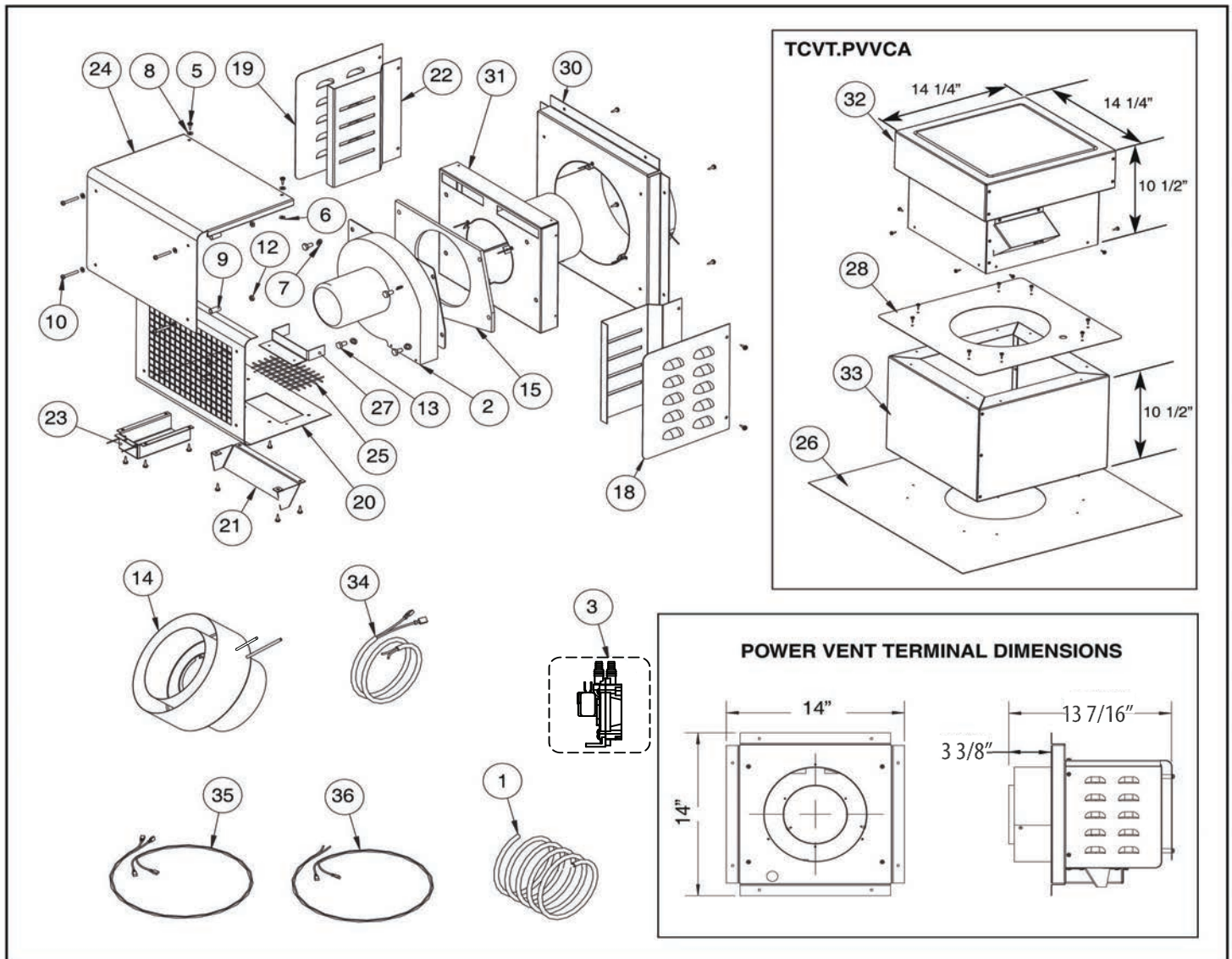
ITEM	PART No.	DESCRIPTION	QTY
1	8240	TUBE, 5/16" OD, 1/16" THICK	2
2	5024.62	BLOWER POWER VENT	1
3	5027.15	PRESSURE SWITCH	1
4		3/8" STRAIN RELIEF	2
5		#8 x 1/2" PAN HD SKT 18.8 STAINLESS STEEL	46
6		ID x .379 OD x .062 THK	2
7		1/4 MED LOCKWASHER 18.8 SS	5
8		STANDARD 18-8 SS, #8 FLAT WASHER	6
9		SP100 .25 x .75 AK	4
10		SCREW, #8-32 x1 1/4 RND HD	4
11		#8-32 x5/16 PAN QUADREX	1
12		HEX NUT, STAINLESS 18-8 PLAIN	4
13		1/4-20 x1/2 NC GR 5 HEX C/S PLTD	5
14	5096.814	VENTING ADAPTER	1
15		1/4" LDF PAPER	1
17		BUSHING, SHORTY B625 500	2
18		SIDE COVER, RIGHT	1
19		SIDE COVER, LEFT	1

ITEM	PART No.	DESCRIPTION	QTY
20		INSIDE COVER	1
21		EXHAUST SHIELD	1
22		SECONDARY RAIN SHIELD	2
23		JUNCTION BOX	1
24		TOP COVER	1
25		EXHAUST SCREEN	1
26		FLASHING	1
27		OUTLET AIR CHANNEL	1
28		DRIP SHIELD	1
30		VENT COLLAR	1
31		VENT EXHAUST ASSEMBLY	1
32		VERTICAL RAIN CAP, TCVT	1
33		VERTICAL STANDOFF	1
34		BLOWER WIRING	1
35	CVT.50271c2C2	PRESSURE SWITCH WIRING	1
36	TCVT.50271C2	POWER VENT SWITCH WIRE	1

ITEM 35 AND 36 ARE USED WITH SERIES "C" FIREPLACES ONLY

\* NOT SHOWN

ONLY ITEMS WITH PART NUMBERS SHOWN ARE SOLD SEPARATELY



# Venting Components

## SIMPSON DURAVENT COMPONENTS

Number	Description
1208	6" Pipe Length
1207	9" Pipe Length
1206	12" Pipe Length
1204	24" Pipe Length
1203	36" Pipe Length
1202	48" Pipe Length
1211	11" to 14-5/8" Pipe, Adjustable
1217	4-10" Pipe, Adjustable
1245	45° Elbow
1290	90° Elbow
1240	Round Ceiling Support /Wall Thimble Cover
1241	Cathedral Ceiling Support Box
1242	Wall Firestop
1247	Wall Thimble
1263	Ceiling Firestop
1288	Wall Strap

## SECURE VENT COMPONENTS

Number	Description
SV5L6	6" Pipe Length
SV5L12	12" Pipe Length
SV5L24	24" Pipe Length
SV5L36	36" Pipe Length
SV5L48	48" Pipe Length
SV5LA	6" Pipe, Adjustable
SV5LA12	12" Pipe, Adjustable
SV5LA24	24" Pipe, Adjustable
SV5E45	Swivel 45° Elbow
SV5E90	Swivel 90° Elbow
SV5CSB	Adjustable decorative sq. cathedral support
SV5AC	Collar for decorative sq. cathedral support
SV5SU	Universal support
SV5SD	Floor support
SV5BM	Wall band
SV5RSA	Attic radiation shield
SV5RSM	Wall radiation shield
SV5BF	Firestop

## SELKIRK DIRECT-TEMP

Number	Description
1605006	6" Pipe Length
1605009	9" Pipe Length
1605012	12" Pipe Length
1605018	18" Pipe Length
1605024	24" Pipe Length
1605036	36" Pipe Length
1605048	48" Pipe Length
1605082	4-10" Pipe, Adjustable
1605215	45° Elbow
1605230	90° Elbow
1605424B	Cathedral ceiling support box (blk)
1605500	Firestop spacer
1605460B	Wall thimble (blk)
1605430	Wall support band

## ICC MODEL EXCELDIRECT

Number	Description
TC-5DL6	6" Pipe Length
TC-5DL1	12" Pipe Length
TC-5DL2	24" Pipe Length
TC-5DL4	48" Pipe Length
TC-5DLF	36" Flexible Length
TC-5DLT	12" Pipe, Adjustable, Galvalume
TE-5DE45	Swivel 45° Elbow, Galvalume
TE-5DE90	Swivel 90° Elbow, Galvalume
TM-5SS	Square Support / Radiation Shield
TM-5RDS	Round Support / Radiation Shield
TM-5CS	Cieling Support / Firestop
TM-OS	Offset Support
TM-SR	Roof Support
TM-WS	Adjustable Wall Support
TM-5WT	Insulated Wall Thimble
TM-5TR	Trim Ring, Black
TM-5AS	Attic Radiation Shield / Firestop









© 2017 Copyright Pacific Energy Fireplace Products LTD

Reproduction, adaptation, or translation  
without prior written permission is prohibited,  
except as allowed under the copyright laws.



**For Technical Support, please contact your retailer.**

**[www.townandcountryfireplaces.net](http://www.townandcountryfireplaces.net)  
2975 Allenby Rd., Duncan, BC V9L 6V8**

Printed in Canada