

SUPER SERIES

WOOD BURNING STOVES
FOR HEATING MEDIUM SPACES



SUPER 27
SUPER CLASSIC

SUPER 27

FREESTANDING STOVE

FOR MEDIUM SPACES



SUPER CLASSIC – TITANIUM

SUPER CLASSIC

FREESTANDING STOVE

FOR MEDIUM SPACES

DESIGN-A-FIRE
A SYSTEM BY PACIFIC ENERGY

Nickel
Arched and Radiant Door

Gold
Arched and Radiant Door

Metallic Black
Arched and Radiant Door

Brushed Nickel
Arched and Radiant Door

Pacific Energy Super Series Wood Stoves are customizable in your choice of door, trivet and leg finishes. Available in Gold, Nickel, Metallic Black and Brushed Nickel.



FEATURED TECHNOLOGIES



BAFFLE SYSTEM

Pacific Energy is a recognized industry leader in "clean burn" technology, as exemplified in our unique high capacity baffle system for preheating secondary combustion air for re-burning. By burning the combustible elements in the air, we improve our stoves' environmental performance while significantly reducing the amount of wood that is consumed.

FLOATING FIREBOX

Our floating firebox system is legendary in the industry. Solidly designed with steel brick-support rails, it allows key parts to freely expand and contract, which reduces metal fatigue and adds years of life to the entire fireplace. The steel baffle (part of the clean-burning secondary combustion system) and the flame shield (which protects the stove top from intense heat) are all part of the floating firebox system.

KNIFE EDGE DOOR

A formed and welded knife edge opening creates a superior air tight seal to the door gasket while strengthening the stove face. This is a more labor intensive design but our experience has proven this is the best way to manufacture a fireplace.

SINGLE LEVER AIR CONTROL

It's never been simpler to achieve a clean, efficient flame. With Pacific Energy systems, a single, easy-to-operate air control lever can regulate the entire burn.



Heat Output Cord Wood
72,000 BTU

34,600 BTU EPA Test Fuel

| | |
|------------------|------------|
| Efficiency (LHV) | 81.6% |
| Emissions | 3.4 gm/hr. |
| Log Size (max) | 18 inches |
| Firebox Size | 2.1 cu.ft. |
| Glass Size | 122 sq.in. |

| | |
|---------------|---------|
| Weight | |
| Super 27 | 355 lb. |
| Super Classic | 340 lb. |

Our most popular woodburning stove, the Super 27 delivers superb heating performance, easy loading and operation, and reliability. Customize your Super to complement your home: mount it on a pedestal, choose from a variety of leg finishes, and select the door style and finish.

- STANDARD FEATURES**
- EPA Certified
 - Reliable, Durable Non-Catalytic Technology
 - Easy, one-touch operation
 - Airwash Technology for clear, clean glass
 - Multi-Port Combustion Air Injection System
 - Inside and outside combustion air capable
 - Floating firebox for extended stove life
 - Metallic black finish
 - Heavy plate-steel top
 - 304 Stainless Steel baffle, insulation cover, rails and flame shield
 - Boost air for easy lighting
 - Mobile home approved
 - North-South loading

- DESIGN OPTIONS**
- Metallic Black Pedestal Base
 - Legs: choice of four finishes
 - Arched door: choice of four finishes
 - Radiant door: choice of four finishes

- PERFORMANCE OPTIONS**
- Easy-to-use ash disposal system
 - Temperature-Actuated Variable-Speed Blower
 - Screen Door

The Super Classic features the exceptional performance the Super 27 beautifully clad in lustrous porcelain enamel. Engineered for proven wood-burning performance in an elegant, customizable package; the Super Classic allows you to design a stove from a choice of eight porcelain enamel colors, arched or radiant doors, legs in four finishes, and decorative trivets.

- STANDARD FEATURES**
- EPA Certified
 - Reliable Non-Catalytic Technology
 - Easy, one-touch operation
 - Airwash Technology for clear, clean glass
 - Multi-Port Combustion Air Injection System
 - Inside and outside combustion air capable
 - Floating firebox for extended stove life
 - Easy-to-use ash disposal system
 - Plate-steel top under decorative top
 - 304 Stainless Steel baffle, rails and flame shield
 - Boost air for easy lighting
 - Mobile Home approved
 - North-South loading

- DESIGN OPTIONS**
- Porcelain enamel finish: choice of eight colors
 - Legs: choice of four finishes
 - Arched door: choice of four finishes
 - Radiant door: choice of four finishes
 - Decorative trivet: choice of three finishes

- PERFORMANCE OPTIONS**
- Temperature-Actuated Variable-Speed Blower
 - Screen Door

PORCELAIN OPTIONS

| | | |
|--------------------|-------------|------------|
| Ebony | Ivory | Sunset Red |
| Coffee Bean Brown* | Titanium* | Copper* |
| Black Pearl* | Royal Blue* | |

* Premium Colour

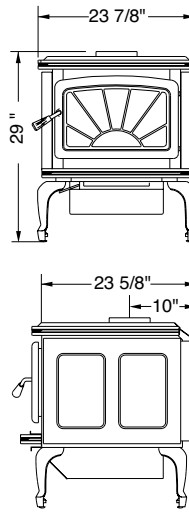
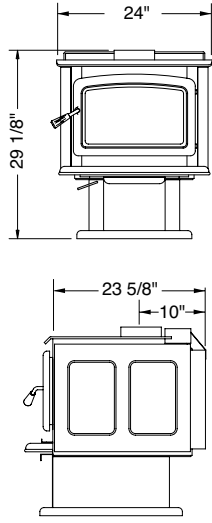
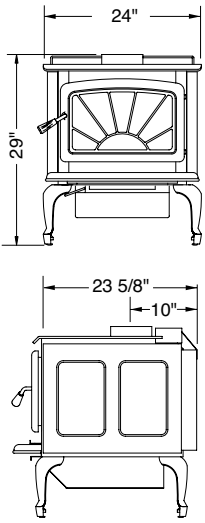
FOR MORE INFORMATION VISIT
www.pacificenergy.net

SUPER 27 LEG MODEL

SUPER 27 PEDESTAL MODEL

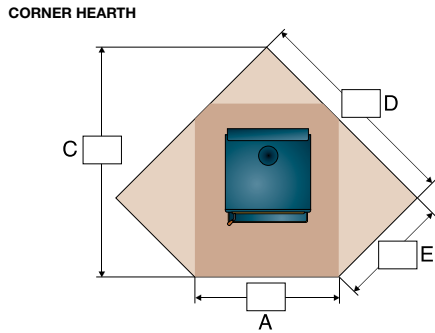
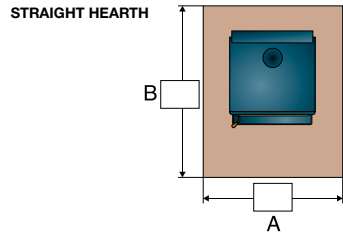
SUPER CLASSIC

TECHNOLOGIES



FLOOR PROTECTOR DIMENSIONS

CANADA



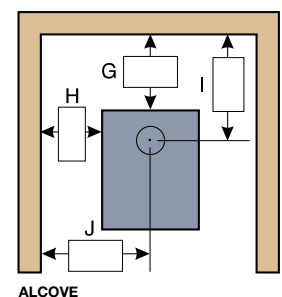
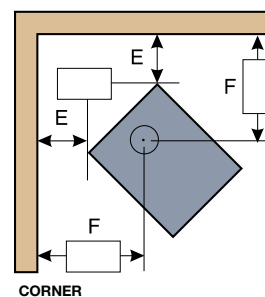
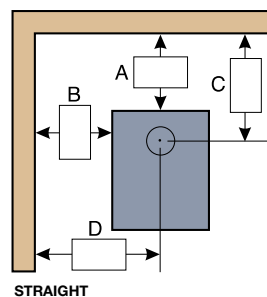
| | SUPER27 SUPER CLASSIC | | | | |
|--|-------------------------|---------|---------|---------|---------|
| | A | B | C | D | E |
| Minimum (Not extended to back wall) | 40" | 50 1/2" | - | - | - |
| Residential, single wall, vertical connector | 40" | 54 1/2" | 67 7/8" | 62 1/8" | 33 7/8" |
| Residential, single wall, horizontal connector | 40" | 50 1/2" | 67 7/8" | 62 1/8" | 33 7/8" |
| Residential, double wall, vertical connector | 40" | 47 1/2" | 58" | 55 1/8" | 26 7/8" |
| Alcove, double wall, connector | 40" | 52 1/2" | - | - | - |
| Mobile home | 40" | 50 1/2" | 63 5/8" | 59 1/8" | 30 7/8" |

USA

| | SUPER27 SUPER CLASSIC | | | | |
|--|-------------------------|---------|---------|---------|---------|
| | A | B | C | D | E |
| Minimum (Not extended to back wall) | 34" | 40 1/2" | - | - | - |
| Residential, single wall, vertical connector | 34" | 52 1/2" | 65 7/8" | 58 3/8" | 34 1/4" |
| Residential, single wall, horizontal connector | 34" | 48 1/2" | 65 7/8" | 58 3/8" | 34 1/4" |
| Residential, double wall, vertical connector | 34" | 45 1/2" | 55 5/8" | 51 3/8" | 27 1/4" |
| Alcove, double wall, connector | 34" | 50 1/2" | - | - | - |
| Mobile home | 34" | 48 1/2" | 61 1/4" | 55 3/8" | 31 1/4" |

CLEARANCES TO COMBUSTIBLES

| | From top of stove to ceiling | STRAIGHT (VERTICAL CONNECTOR) | | | | STRAIGHT (HORIZONTAL CONNECTOR) | | | | CORNER | | ALCOVE | | | |
|--|------------------------------|-------------------------------|-----|-----|-----|---------------------------------|-----|-----|-----|--------|-----|--------|-----|-----|-----|
| | | A | B | C | D | A | B | C | D | E | F | G | H | I | J |
| RESIDENTIAL SINGLE WALL CONNECTOR | 56" | 12" | 18" | 22" | 30" | 8" | 14" | 18" | 26" | 11" | 25" | N/A | N/A | N/A | N/A |
| RESIDENTIAL DOUBLE WALL CONNECTOR | 56" | 5" | 14" | 15" | 26" | 5" | 14" | 15" | 26" | 4" | 18" | 10" | 16" | 20" | 28" |
| MOBILE HOME DOUBLE WALL CONNECTOR | 56" | 8" | 16" | 18" | 28" | N/A | N/A | N/A | N/A | 8" | 22" | N/A | N/A | N/A | N/A |



For reference only. Installations should be based on manuals and rating labels. Specifications subject to change.