

# SUMMIT SERIES

**WOOD BURNING STOVES**  
FOR HEATING LARGE SPACES



SUMMIT  
SUMMIT CLASSIC

# SUMMIT

## FREESTANDING STOVE

FOR LARGE SPACES



**DESIGN-A-FIRE**  
A SYSTEM BY PACIFIC ENERGY



Pacific Energy Summit Series Wood Stoves are customizable in your choice of door and leg finishes. Available in Gold, Nickel, Metallic Black and Brushed Nickel.



### Heat Output Cord Wood

# 99,000 BTU

38,500 BTU EPA Test Fuel

EFFICIENCY (LHV)	80.4%
EMISSIONS	3.5 GM/HR.
LOG SIZE (MAX)	18-20 INCHES
FIREBOX SIZE	3.0 CU.FT.
GLASS SIZE	151 SQ.IN.
WEIGHT	APPROX. 435 LB.

When you need the heating power to keep large homes warm and comfortable through long winter nights, choose Summit. Crafted for maximum heating capacity with Extended Burn Technology (EBT2) for the longest burn time, the Summit, and the Summit Classic in a beautiful, durable porcelain finish, are the wood stoves of choice for bigger spaces and colder nights.

### FEATURES

- Reliable Non-Catalytic Technology
- Extended Burn Technology (EBT2)
- Easy one-touch operation
- Airwash Technology for clear, clean glass
- Multi-Port combustion air injection system
- Inside and outside combustion air capable
- Floating firebox for extended stove life
- Safe, easy front-to-back fuel loading
- Heavy plate-steel top
- 304 Stainless Steel baffle, rails and flame shield
- Boost air for easy lighting
- Mobile home approved
- North-South loading

# SUMMIT CLASSIC

FREESTANDING STOVE  
FOR LARGE SPACES



## DESIGN OPTIONS

SUMMIT  
Legs: choice of four finishes  
Pedestal base  
Arched door: choice of four finishes  
Metallic black finish

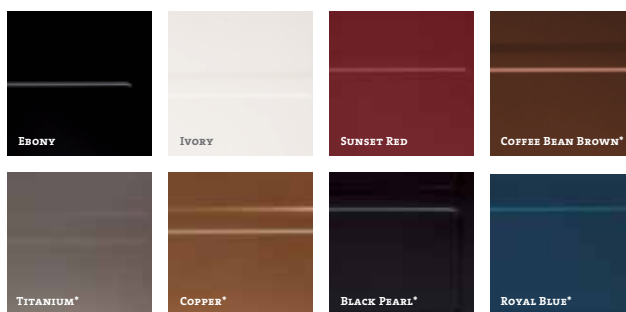
SUMMIT CLASSIC  
Legs: choice of four finishes  
Arched door: choice of four finishes  
Porcelain enamel: choice of eight colors  
Decorative trivet: choice of three finishes

## PERFORMANCE OPTIONS

Temperature-Actuated Variable-Speed Blower  
Easy-to-use ash disposal system  
(optional on Summit; included with Summit Classic)  
Screen Door

## PORCELAIN OPTIONS

Summit Classic is available in eight porcelain enamel colours.



\* Premium Colours

PACIFIC ENERGY

FEATURED TECHNOLOGIES



## BAFFLE SYSTEM

Pacific Energy is a recognized industry leader in “clean burn” technology, as exemplified in our unique high capacity baffle system for preheating secondary combustion air for re-burning. By burning the combustible elements in the air, we improve our stoves’ environmental performance while significantly reducing the amount of wood that is consumed.

## FLOATING FIREBOX

Our floating firebox system is legendary in the industry. Solidly designed with steel brick-support rails, it allows key parts to freely expand and contract, which reduces metal fatigue and adds years of life to the entire fireplace. The steel baffle (part of the clean-burning secondary combustion system) and the flame shield (which protects the stove top from intense heat) are all part of the floating firebox system.

## EBT2 EXTENDED BURN TECHNOLOGY

Our second-generation Extended Burn Technology, or EBT2, precisely regulates secondary airflow based on vacuum created by the chimney for a longer, cleaner, more economical burn. This automatically adjusts the secondary combustion system, for a cleaner, more efficient burn and extended burn time.

## KNIFE EDGE DOOR

A formed and welded knife edge opening creates a superior air tight seal to the door gasket while strengthening the stove face. This is a more labor intensive design but our experience has proven this is the best way to manufacture a fireplace.



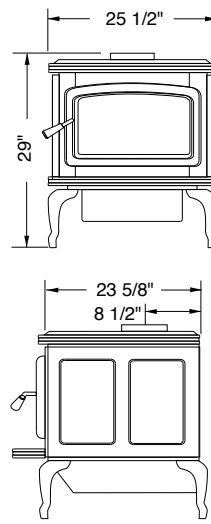
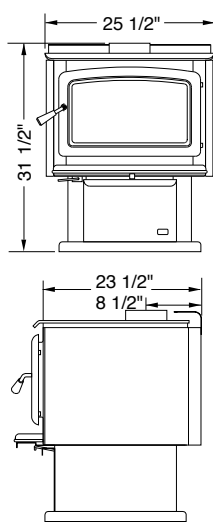
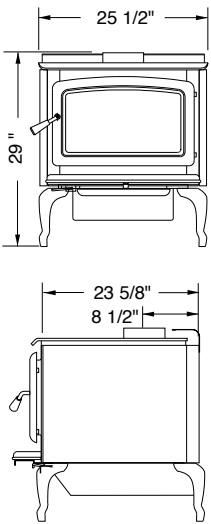
FOR MORE INFORMATION VISIT  
[www.pacificenergy.net](http://www.pacificenergy.net)

**SUMMIT LEG MODEL**

**SUMMIT PEDESTAL MODEL**

**SUMMIT CLASSIC**

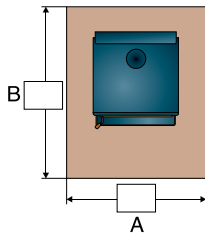
**TECHNOLOGIES**



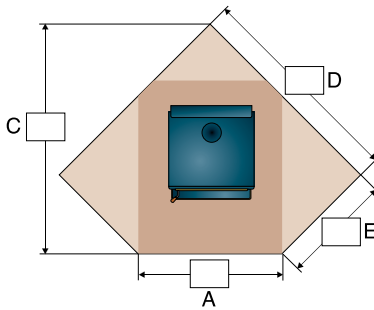
- AIR WASH  
A SYSTEM BY PACIFIC ENERGY
- BAFFLE SYSTEM
- EBT2 EXTENDED BURN  
TECHNOLOGY
- FLOATING FIREBOX
- KNIFE EDGE DOOR
- SELF SEALING ASH DUMP
- SINGLE LEVER  
AIR CONTROL

**FLOOR PROTECTOR DIMENSIONS**

**STRAIGHT HEARTH**



**CORNER HEARTH**



**CANADA**

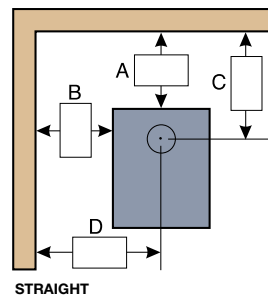
	A	B	C	D	E
Minimum (Not extended to back wall)	41 1/2"	49 1/2"	-	-	-
Residential, single wall, vertical connector	41 1/2"	50 1/2"	62 1/2"	58 7/8"	29 1/2"
Residential, double wall, vertical connector	41 1/2"	49"	61 1/16"	57 7/8"	28 1/2"
Alcove, double wall, connector	41 1/2"	51 1/2"	-	-	-
Mobile home	41 1/2"	51 1/2"	65 5/16"	60 7/8"	31 1/2"

**USA**

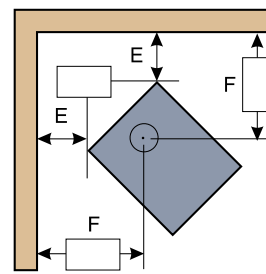
	A	B	C	D	E
Minimum (Not extended to back wall)	35 1/2"	39 1/2"	-	-	-
Residential, single wall, vertical connector	35 1/2"	48 1/2"	60"	53 5/8"	30 3/16"
Residential, double wall, vertical connector	35 1/2"	47"	58 9/16"	53 5/8"	29 3/16"
Alcove, double wall, connector	35 1/2"	49 1/2"	-	-	-
Mobile home	35 1/2"	49 1/2"	62 7/8"	56 5/8"	32 3/16"

**CLEARANCES TO COMBUSTIBLES**

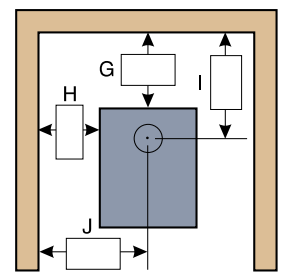
	From top of stove to ceiling	STRAIGHT (VERTICAL CONNECTOR)				STRAIGHT (HORIZONTAL CONNECTOR)				CORNER		ALCOVE			
		A	B	C	D	A	B	C	D	E	F	G	H	I	J
<b>RESIDENTIAL SINGLE WALL CONNECTOR</b>	54"	9"	14"	17 1/2"	26 3/4"	9"	14"	17"	26 3/4"	6"	17 1/2"	N/A	N/A	N/A	N/A
<b>RESIDENTIAL DOUBLE WALL CONNECTOR</b>	54"	7 1/2"	13"	16"	25 3/4"	7 1/2"	13"	16"	25 3/4"	5"	19 3/8"	10"	16"	18 1/2"	28 13/16"
<b>MOBILE HOME DOUBLE WALL CONNECTOR</b>	54"	10"	18"	18"	30 13/16"	N/A	N/A	N/A	N/A	9"	22"		N/A	N/A	N/A



STRAIGHT



CORNER



ALCOVE



For reference only. Installations should be based on manuals and rating labels.